

Child Protection Week

Global Overview on Child Protection week

Dr Sithembile Nqeketo
WHO-SOUTH AFRICA

OUTLINE

- Definition of Child
- Magnitude of the Violence against Children
- Types of violence against children
- Main risk factors
- Global Guidelines
- Protective Factors



Who is a Child?

Term	Age in years															
	0-9	10	11	12	13	14	15	16	17	18	19	20	21	22	23	24
Child	Dark	Dark	Dark	Dark	Dark	Dark	Dark	Dark	Dark	Light	Light	Light	Light	Light	Light	Light
Adolescent	Light	Dark	Dark	Dark	Dark	Dark	Dark	Dark	Dark	Dark	Light	Light	Light	Light	Light	Light
Youth	Light	Light	Light	Light	Light	Light	Dark	Dark	Dark	Dark	Dark	Dark	Dark	Dark	Dark	Dark
Young adult	Light	Light	Light	Light	Light	Light	Light	Light	Light	Dark	Dark	Dark	Dark	Dark	Dark	Dark
Young person	Light	Dark	Dark	Dark	Dark	Dark	Dark	Dark	Dark	Dark	Dark	Dark	Dark	Dark	Dark	Dark

Magnitude of violence against children

Globally up to 1 billion children have experienced physical, sexual or psychological violence in the past year.



Homicide is among the **top five** causes of death in adolescents.



80% of homicide victims are boys.



Beyond these deaths, **tens of millions** more children are affected by violence.



1 in 4 children suffer physical abuse.



Nearly **1 in 5** girls is sexually abused at least once in her life.

Key data

- **21 million adolescent girls (aged 15–19) become pregnant** each year in low- and middle-income countries.
- In 2021, **12.1 million girls aged 15–19** and **499,000 girls aged 10–14** gave birth globally.
- The global adolescent birth rate fell from **64.5 per 1,000 (in 2000) to 42.5 per 1,000** in 2021.
- Child marriage declined globally from **25% in 2010 to 19% in 2020**.

Types of violence against children



<5 years old



5-10 years old



11-17 years old



18+ years old

Child maltreatment

Bullying

Youth violence

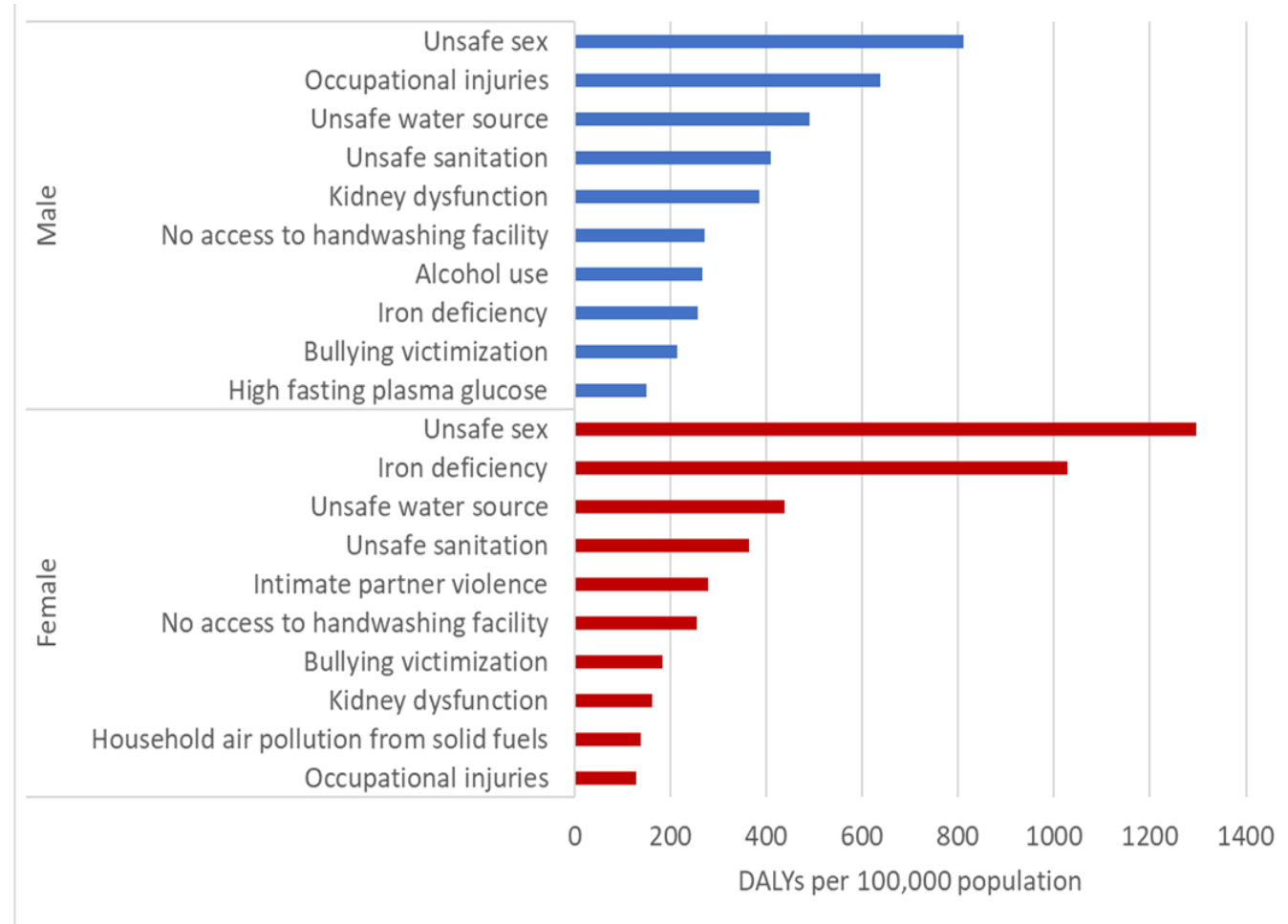
Intimate partner violence

Sexual violence

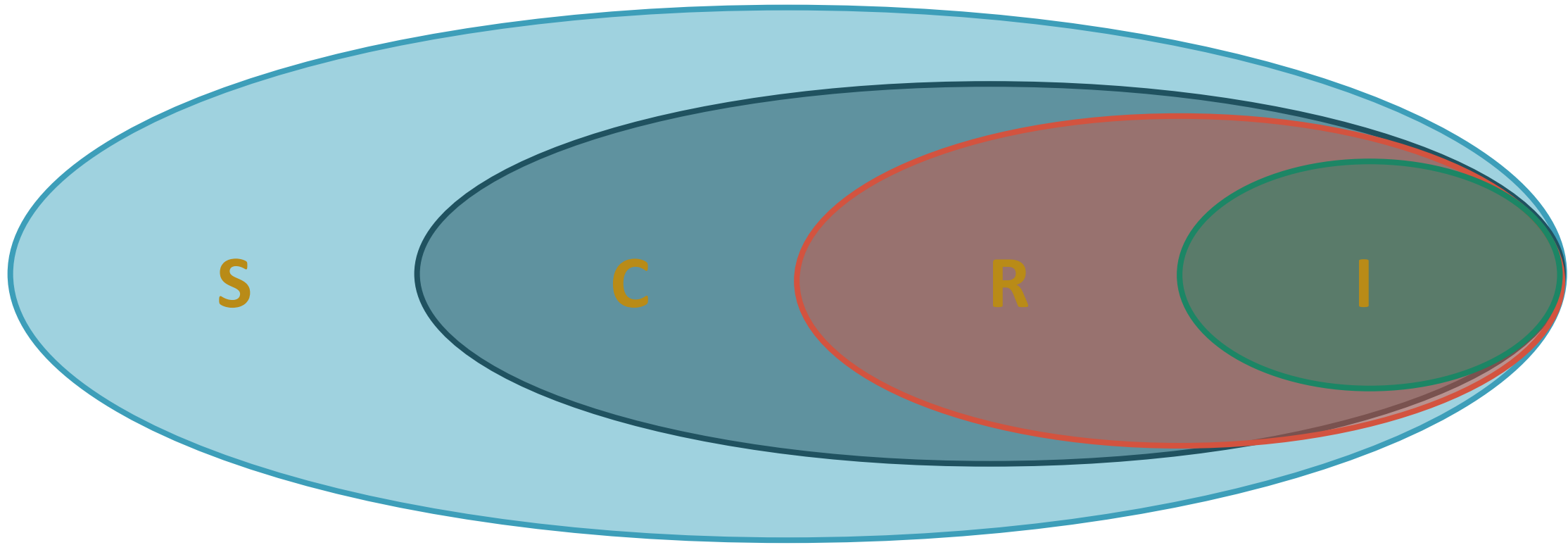
Emotional or psychological violence and witnessing violence



Main risk factors for morbidity and mortality* among adolescents 15 -19 years, 2021, Sub Saharan Africa



Causes of violence against children



Societal

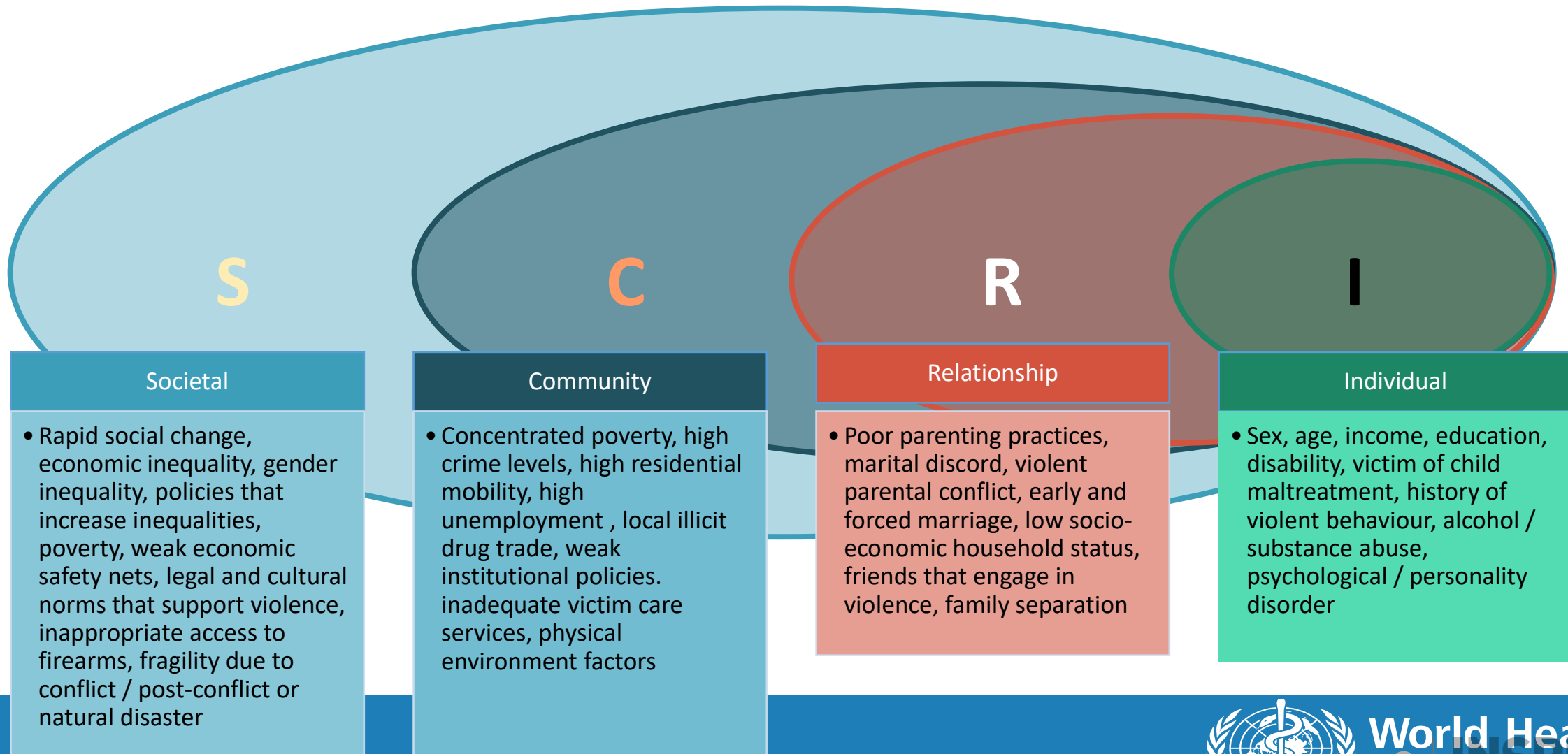
Community

Relationship

Individual



Causes of violence against children – risk factors



Global Guidelines

1. Article 19 of the UN Convention on the Rights of the Child

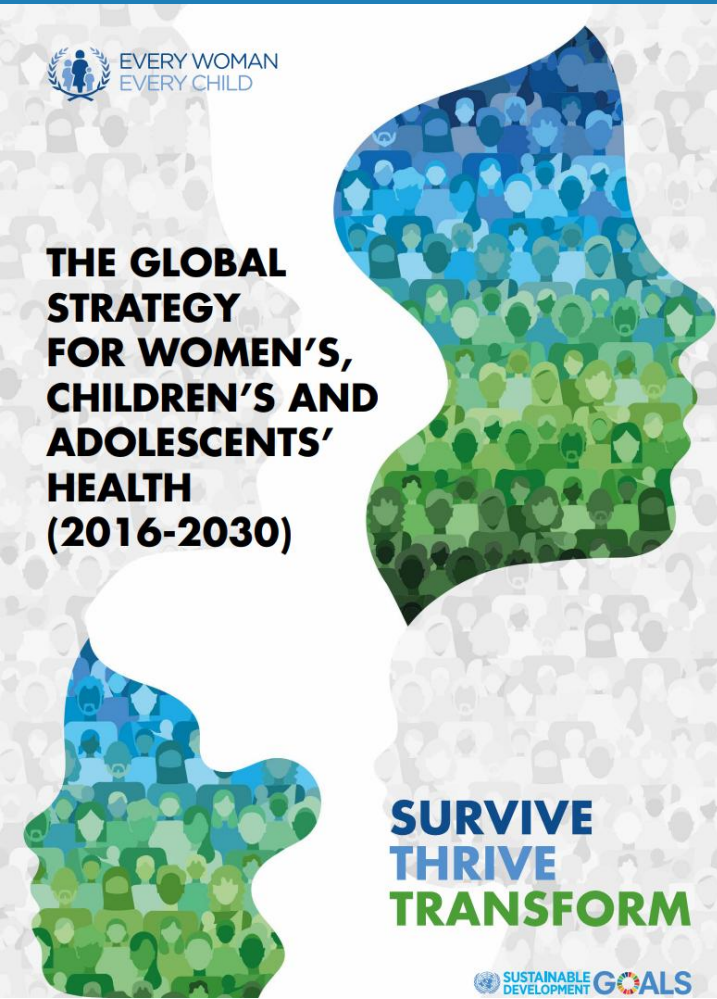
Mandates that governments protect children from all forms of physical and mental violence, injury, abuse, neglect, maltreatment, and exploitation while in the care of parents, legal guardians, or any other caregivers.

2. The Global Strategy for Women's, Children's and Adolescents' Health (2016-2030) is at the heart of the SDG goals 3.

Vision is a world in which every woman, **child and adolescent** realizes their rights to health and well-being, both physical and mental.

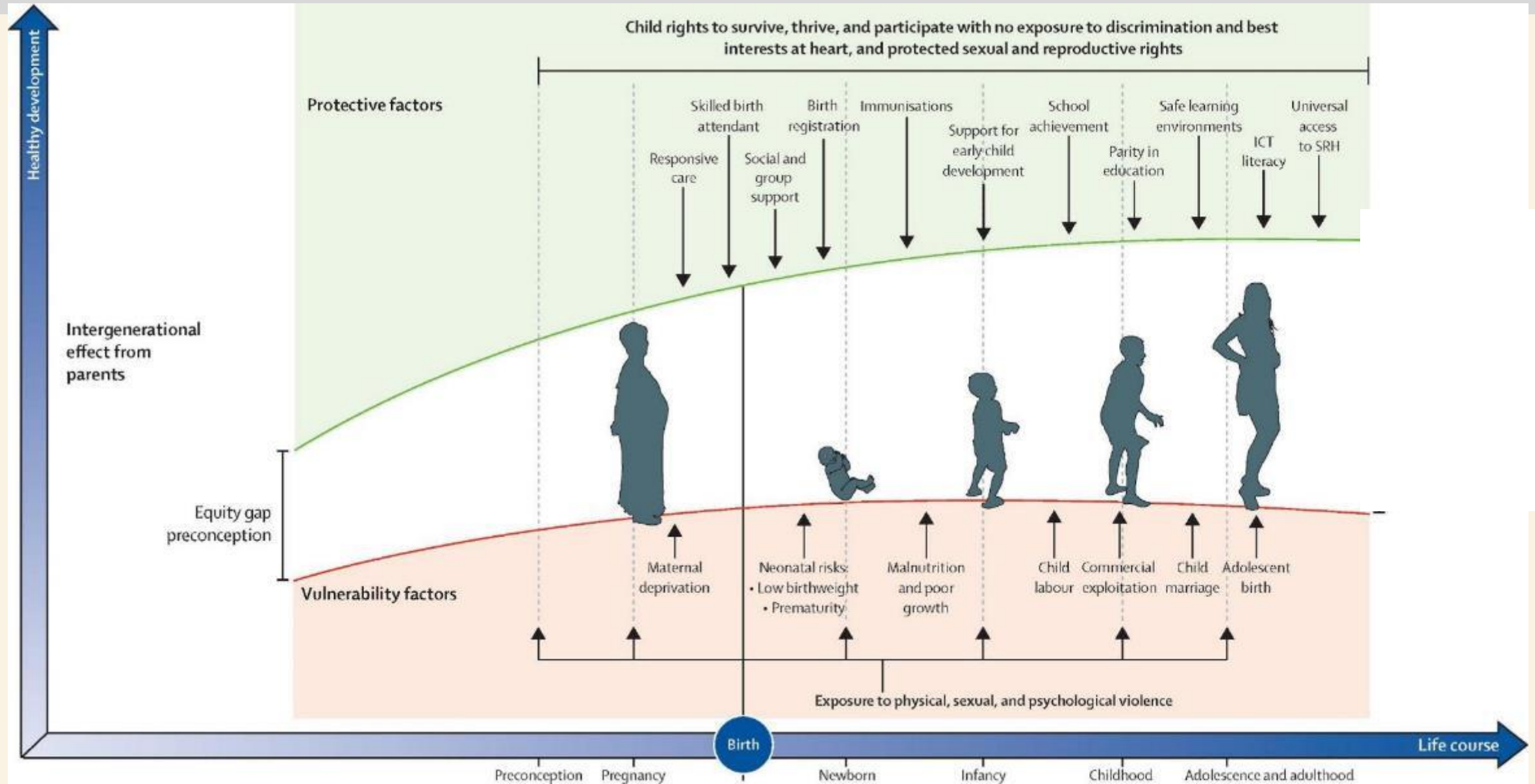


Global Strategy for Women's, Children's and Adolescents' Health



- Takes a life-course approach that aims for the highest attainable standards of health and well-being, physical, mental and social at every age.
- A person's health at each stage of life affects health at other stages and as cumulative effects for the next generation.

Health and well-being depend on interactions between risk and protective factors throughout the life course



NURTURING CARE FOR EARLY CHILDHOOD DEVELOPMENT

NURTURING CARE FOR EARLY CHILDHOOD DEVELOPMENT

A FRAMEWORK FOR HELPING CHILDREN **SURVIVE** AND
THRIVE TO **TRANSFORM** HEALTH AND HUMAN POTENTIAL



- It builds on evidence about how early childhood development unfolds and how to improve policies and interventions
 - Human capital must begin in the earliest years, from pregnancy



The five components of nurturing care

1



GOOD
HEALTH

2



ADEQUATE
NUTRITION

3



SAFETY AND
SECURITY

4



OPPORTUNITIES FOR
EARLY LEARNING

5



RESPONSIVE
CAREGIVING

GOOD HEALTH



Refers to the health and well-being of the children and their caregivers. Why both? We know that the physical and mental health of caregivers can affect their ability to care for the child.



Photo credit:
© UNICEF/UN0198638/Njiokiktjie

ADEQUATE NUTRITION



Refers to maternal and child nutrition. Why both? We know that the nutritional status of the mother during pregnancy affects her health and well-being and that of her unborn child. After birth, the mother's nutritional status affects her ability to provide adequate care to her young child.



Photo credit:
Nyani Quarmyne/Panos Pictures

SAFETY AND SECURITY



Refers to safe and secure environments for children and their families. Includes physical dangers, emotional stress, environmental risks (e.g., pollution), and access to food and water.



Photo credit:
© UNICEF/UN0205718/Njiokiktjien

OPPORTUNITIES FOR EARLY LEARNING



Refers to any opportunity for the infant or child to interact with a person, place, or object in their environment. Recognizes that every interaction (positive or negative) or absence of an interaction is contributing to the child's brain development and laying the foundation for later learning.



Photo credit:
Flickr Creative Commons License/IHH Humanitarian Relief Foundation

RESPONSIVE CAREGIVING

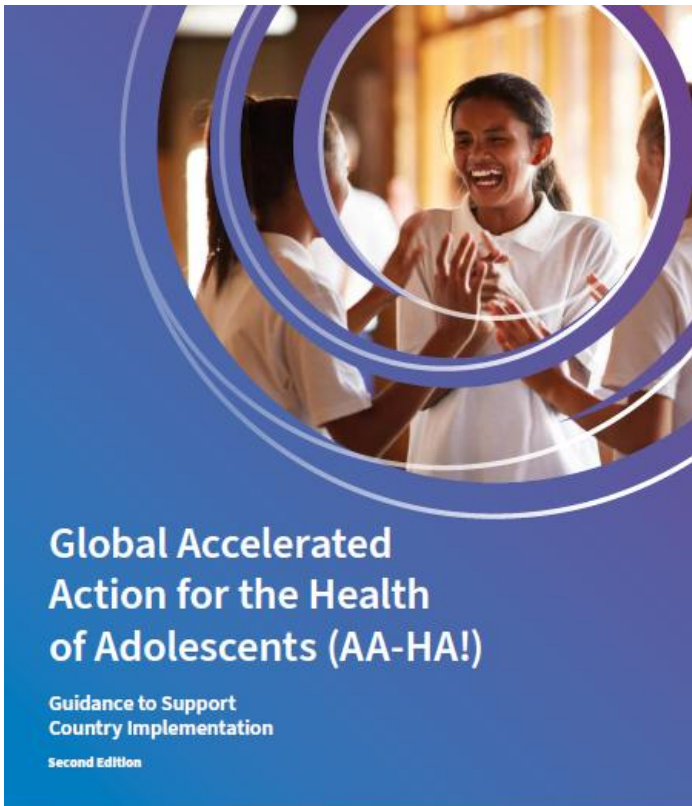


Refers to the ability of the caregiver to notice, understand, and respond to their child's signals in a timely and appropriate manner. Considered the foundational component because responsive caregivers are better able to support the other four components.



Photo credit:
Aga Khan Development Network/J-L. Ray

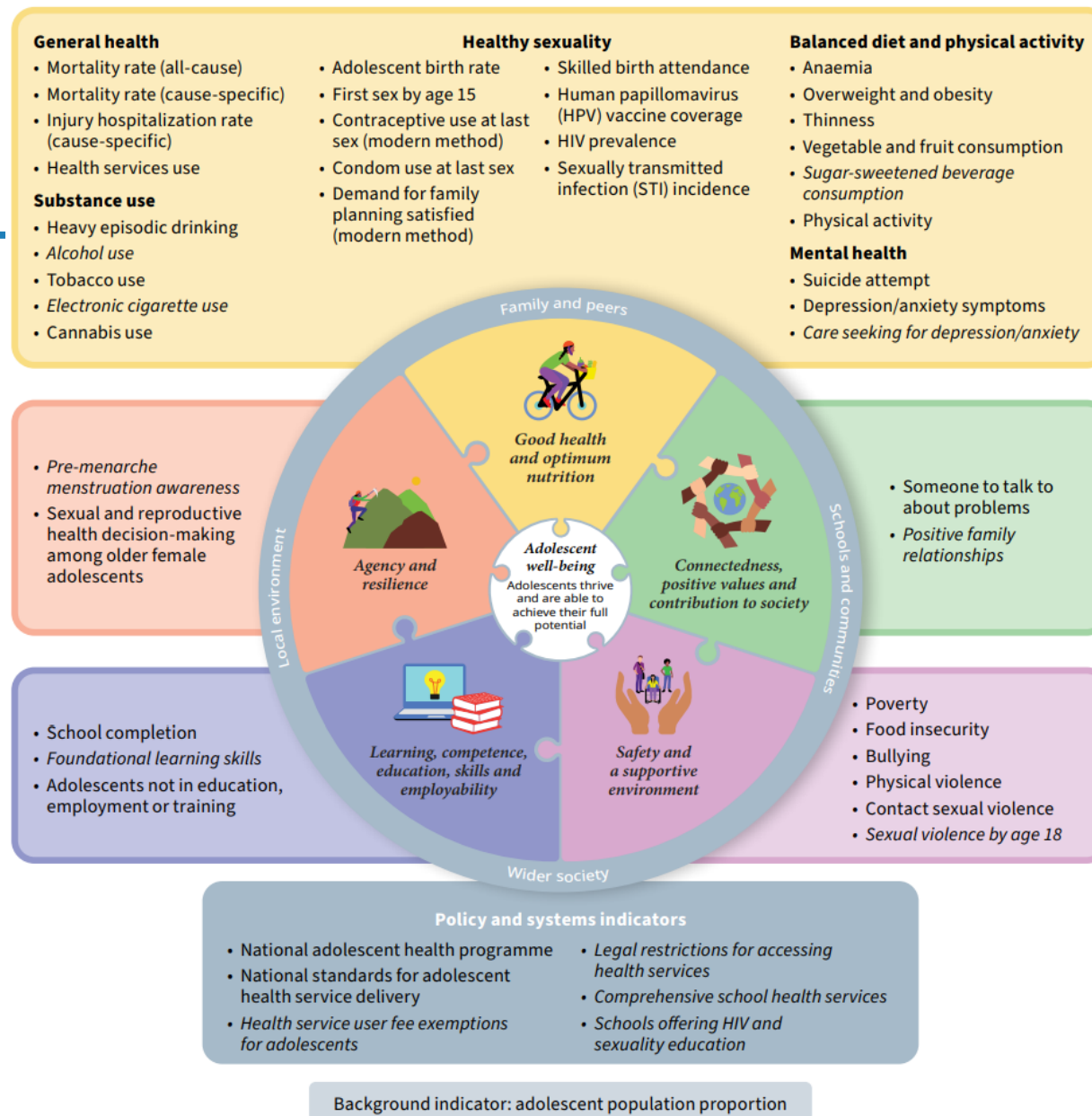
Accelerated Action for Health of Adolescents



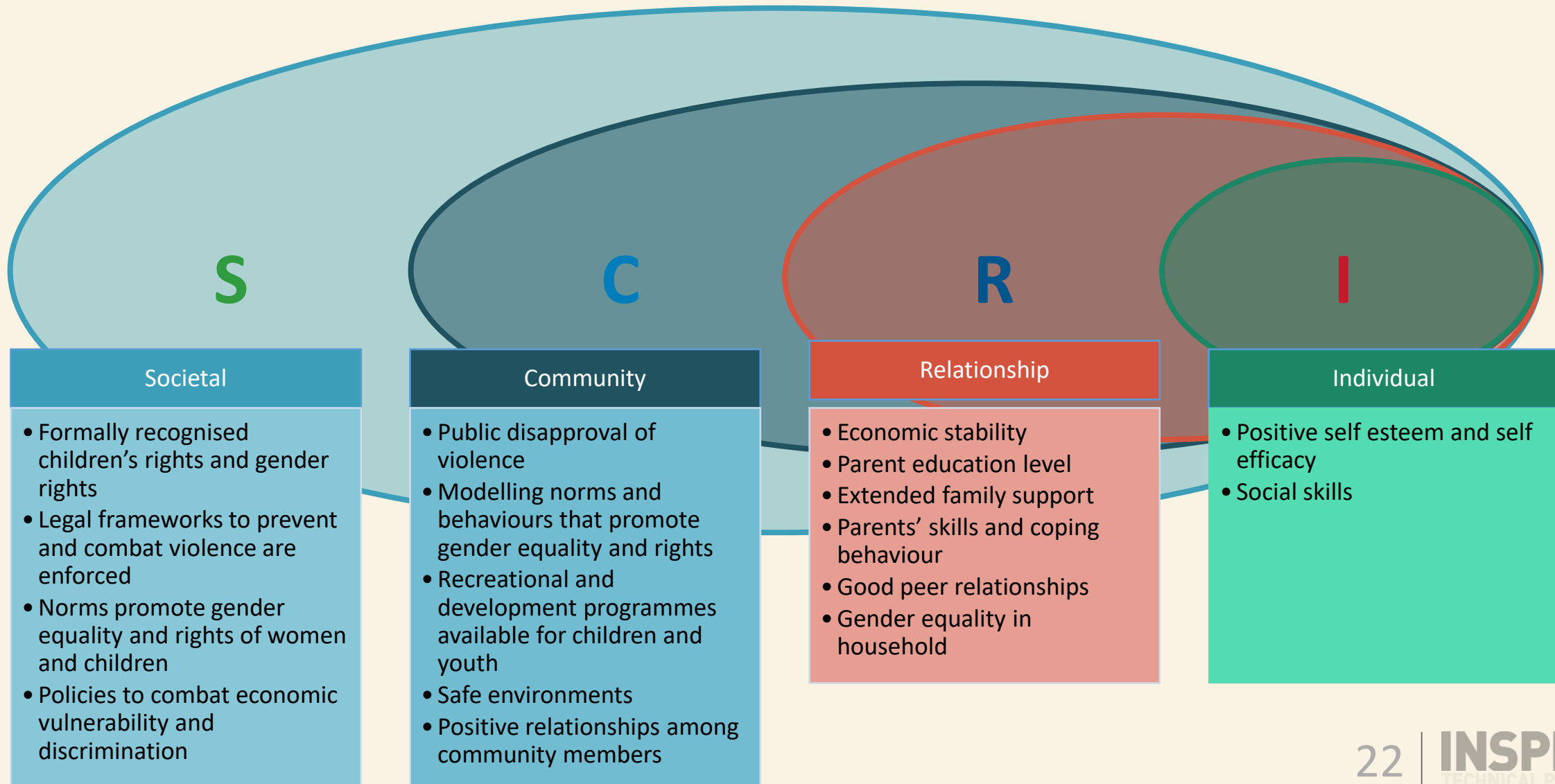
- Adolescents are not simply old children or young adult
- Current health and well-being landscape of the world's over 1.2 billion adolescents
- Multisector evidence-based solutions and presenting strategies for priority setting, planning, implementing, and evaluating health and well-being programmes.



GAMA indicators according to well-being domain



Causes of violence against children - Protective factors



Example: a life course approach to child and adolescent well-care

17 scheduled contacts from birth to age 19 — built on existing platforms, adapted to country context



Four core components delivered at every contact



Designed to be operational and context-adapted

Universal & progressive

All children receive core package; additional support for those at higher risk

Build on existing platforms

EPI, ECD, school health, community — not parallel programmes

Country-adapted phasing

Start with what is feasible; expand as systems strengthen

Life-course continuity

Linked to antenatal care; maternal wellbeing integrated

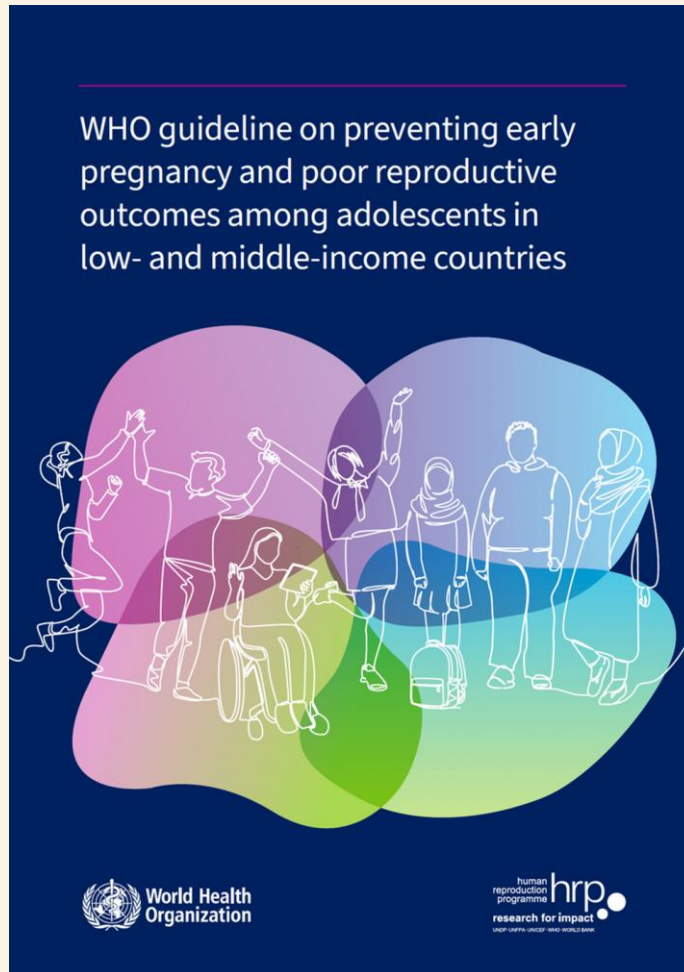
2025 guidelines

Competency and outcomes framework for adolescent health and well-being



World Health Organization | UNAIDS | unicef for every child | unesco | UN WOMEN

WHO guideline on preventing early pregnancy and poor reproductive outcomes among adolescents in low- and middle-income countries



World Health Organization | human reproduction programme hrp research for impact

Global standards for quality health care services for adolescents



World Health Organization | UNAIDS | unesco | unicef for every child | UN WOMEN

Recommendations & Good Practice

Advocate for adolescent pregnancy prevention before the age of 20 years

Sexuality and health education	<ul style="list-style-type: none">- Begins before puberty, to empower with knowledge, skills, values and rights-awareness to lead healthy, dignified lives & have respectful relationships, make informed decisions, and respect themselves and others.- Comprehensive Sexuality Education (CSE)
Reduce coerced sex among adolescents	<ul style="list-style-type: none">- Laws & policies that punish perpetrators, enhance adolescent girls' abilities to resist, build their self-esteem; develop their life skills in communication and negotiation- Engage men and boys in gender-transformative interventions that challenge harmful gender norms, behaviours and violence, supported by broader social-norms change.
Adolescent-Friendly SRH Services	- Confidential, respectful care, Accessible without unnecessary restrictions, Trained providers
Keep Girls in School	- Strong protective effect, Support with uniforms & pads
Engage Parents/ Care givers/ Guardian	Support communication, Family engagement reduces risk
Social & Economic Support	- Reduce vulnerability
Practice example	- Preventive interventions i.e. counseling, health education and outreach sessions at the local school and church, are introduced to adolescents early, before sexual debut, experimenting with substances

Closing message

- ✓ **This is not a new model**
- ✓ **It is a necessary correction**
- ✓ **Integrate populations, equity, and rights**
- ✓ **Historically the emphasis has been on response.**
- ✓ **Prevention requires a change in mindset: focusing on the underlying drivers of violence (instead of the consequences)**



Resources

Report:

<https://bit.ly/44aUQJr>

Press Release:

<https://bit.ly/44a05Jn>

Visuals:

<https://who.canto.global/b/UBH05>

Social kit:

<https://bit.ly/4lwsLlr>

Factsheet:

<https://bit.ly/44RWfm0>

Health Topic Page:

<https://bit.ly/4eRGXD3>

CSE visuals:

<https://who.canto.global/b/LKAG9>

Report on the 2023 policy survey:

<https://bit.ly/44L6j0J>

THANK YOU

