



# The Integrated people-centred eye care (IPEC)

*"A Shared Vision: Collaboration in Global Eye Care"*

**Dr. Kibachio J. Mwangi; MD, PhD**  
NCD & Mental Health Advisor;  
WHO South Africa Country Office; PRETORIA



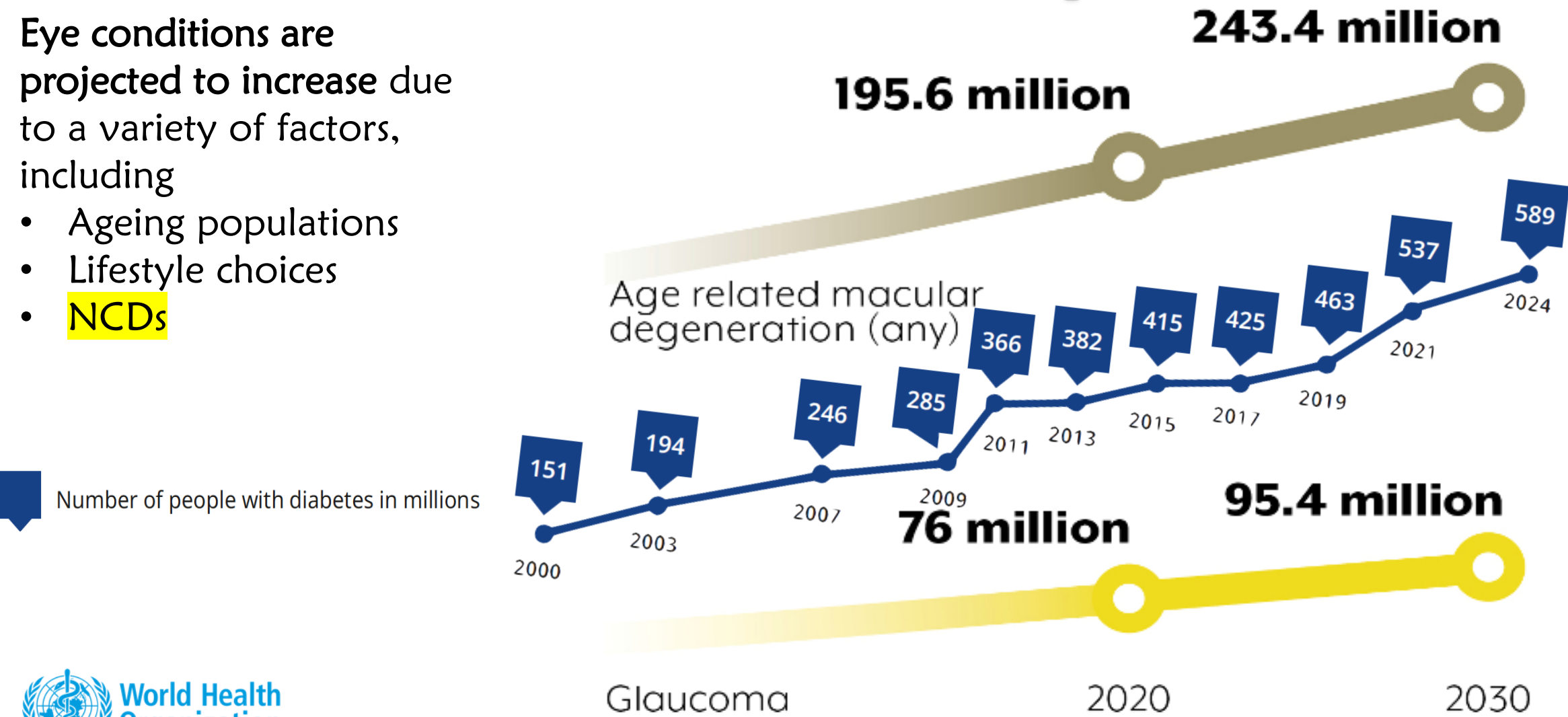
2026 WORLD OPTOMETRY WEEK AND DAY  
COMMEMORATION WEBINAR



# Estimated increase in need

Eye conditions are projected to increase due to a variety of factors, including

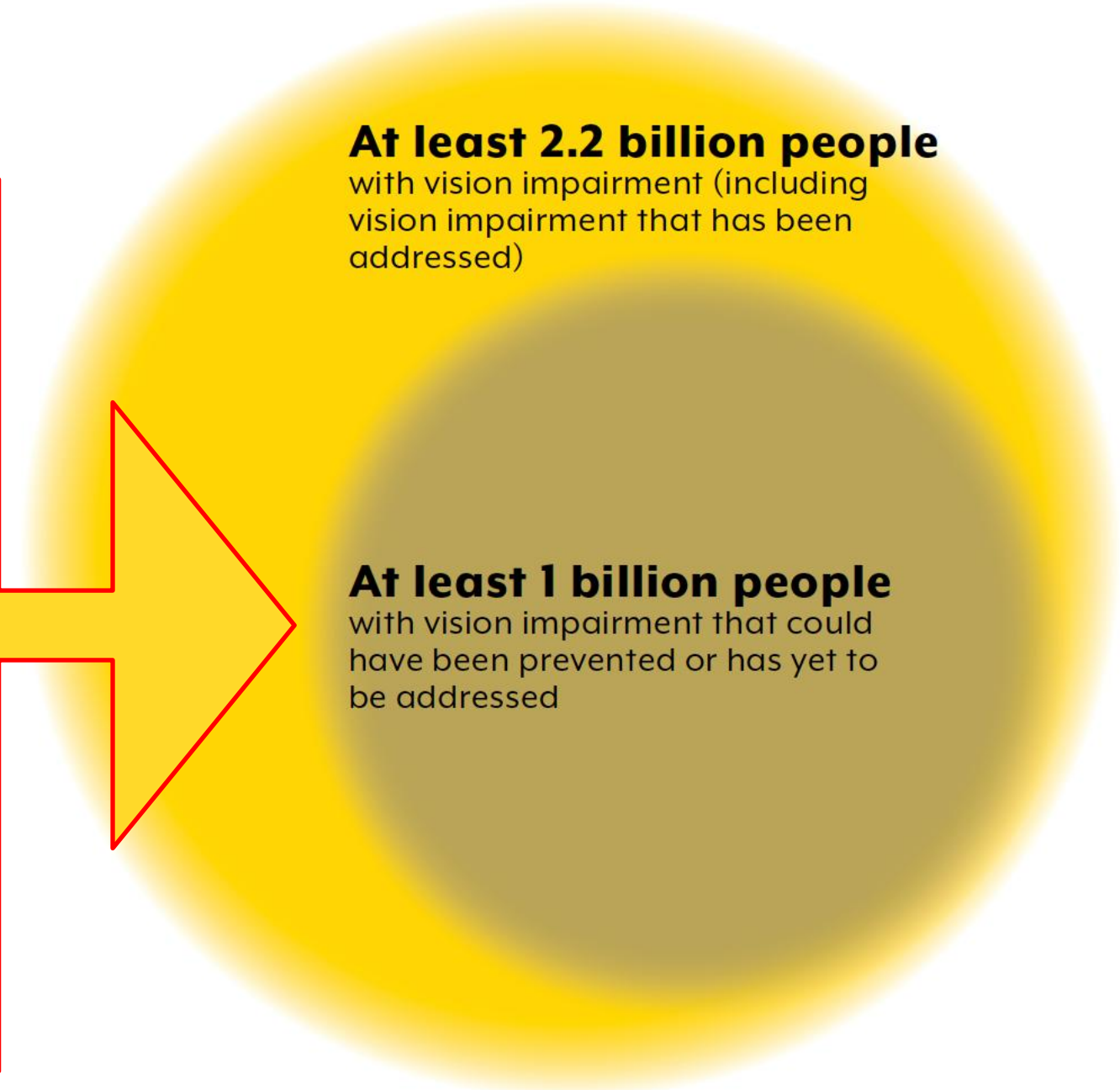
- Ageing populations
- Lifestyle choices
- **NCDs**



# Global Need....

---

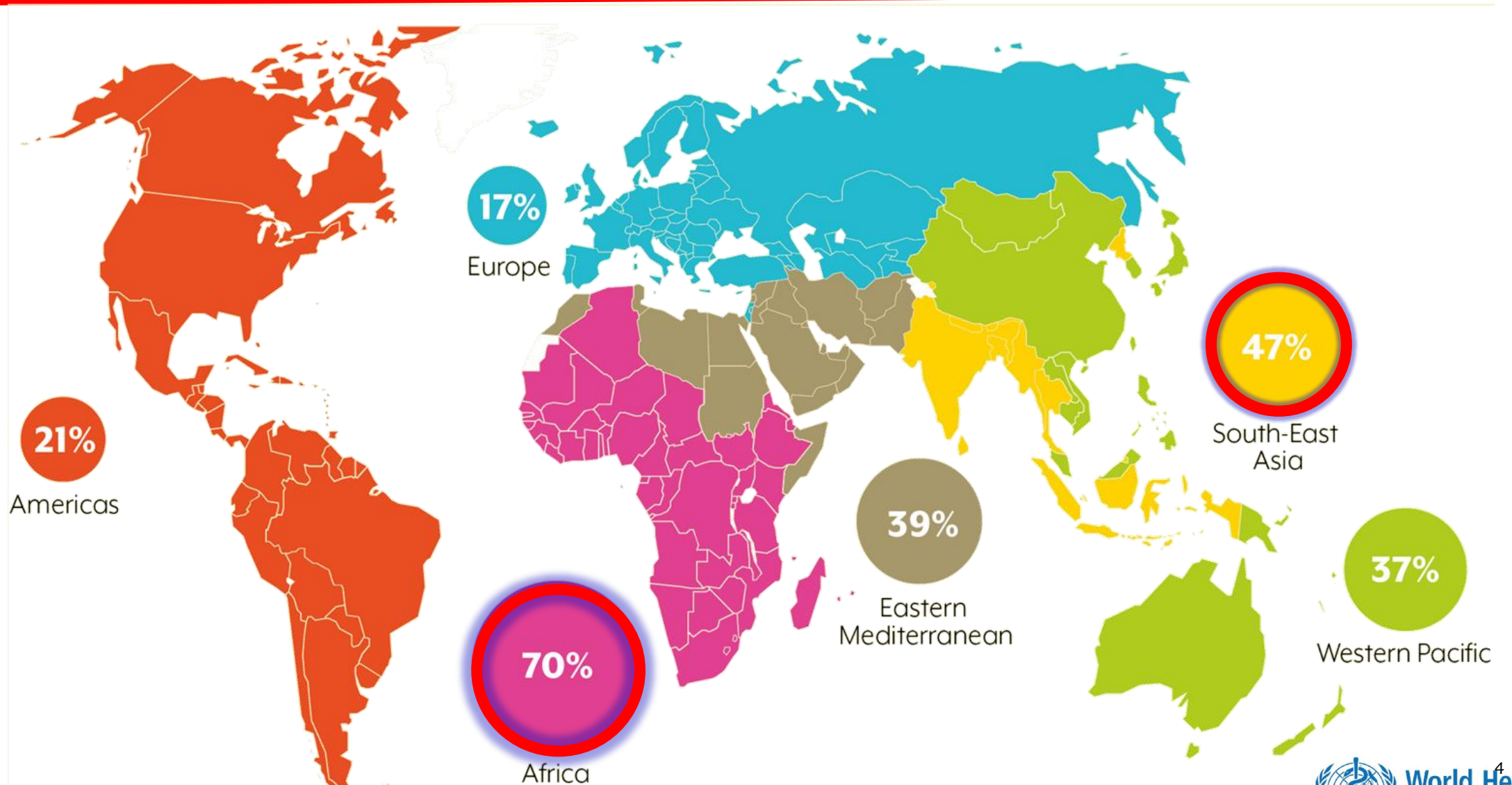
- Unaddressed refractive error (123.7 million)
- Cataract (65.2 million)
- Glaucoma (6.9 million)
- Corneal opacities (4.2 million)
- Diabetic Retinopathy (3 million)
- Trachoma (2 million)
- Unaddressed presbyopia (826 million)



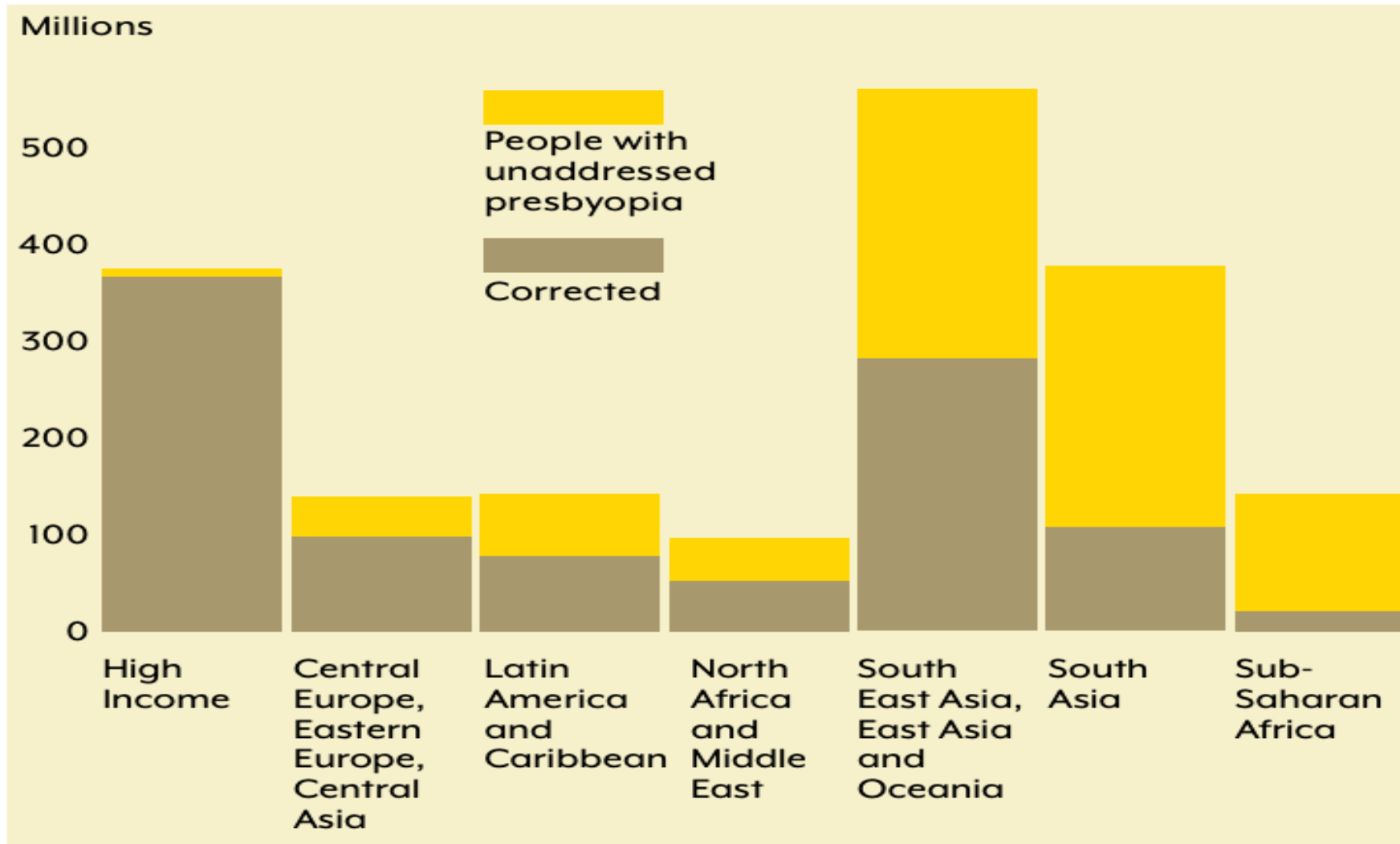
**At least 2.2 billion people**  
with vision impairment (including  
vision impairment that has been  
addressed)

**At least 1 billion people**  
with vision impairment that could  
have been prevented or has yet to  
be addressed

# Refractive Error Coverage- un-met need by WHO region



# Regional comparison: Total number with presbyopia Vs unaddressed presbyopia



Adapted from: Fricke T TN, Resnikoff S, Papas E, Burnett A, Ho S, Naduvilath T, Naidoo K. Global prevalence of presbyopia and vision impairment from uncorrected presbyopia: systematic review, meta-analysis and modelling. *Ophthalmology*. 2018.

# Global Commitment to Act on Eye Care

## 2020: WHA Resolution 73.4

SEVENTY-THIRD WORLD HEALTH ASSEMBLY

WHA73.4

Agenda item 11.7

3 August 2020

### Integrated people-centred eye care, including preventable vision impairment and blindness

The Seventy-third World Health Assembly,

Having adopted the written silence procedure through decision WHA73(7) (2020);<sup>1</sup>

## 2021: 74th WHA Global targets endorsed



SEVENTY-FOURTH WORLD HEALTH ASSEMBLY  
Provisional agenda item 13.9

A74/9 Add.3  
19 April 2021

### Integrated people-centred eye care, including preventable vision impairment and blindness

Global targets for 2030

## 2021: UN GA Resolution 75/310

United Nations

A/RES/75/310



General Assembly

Distr.: General  
26 July 2021

Seventy-fifth session

Agenda item 24

Eradication of poverty and other development issues

### Resolution adopted by the General Assembly on 23 July 2021

[without reference to a Main Committee (A/75/L.108 and A/75/L.108/Add.1)]

75/310. Vision for Everyone: accelerating action to achieve the Sustainable Development Goals

The General Assembly.

## 2025: WHO EB156



Agenda item 7

4 February 2025

Executive Board  
156th session

EB156/CONF./7

### Primary prevention and integrated care for sensory impairments including vision impairment and hearing loss, across the life course

## World report on vision



# WHO Global Eye Health Strategy (2020–2030)

“Towards Universal Health Coverage – Integrated People-Centred Eye Care”



SEVENTY-THIRD WORLD HEALTH ASSEMBLY

WHA73.4

Agenda item 11.7

3 August 2020

## Integrated people-centred eye care, including preventable vision impairment and blindness

The Seventy-third World Health Assembly,

Having adopted the written silence procedure through decision WHA73(7) (2020):<sup>1</sup>

Recalling resolutions WHA51.11 (1998) on global elimination of blinding trachoma, WHA56.26 (2003) on the elimination of avoidable blindness, WHA59.25 (2006) and WHA62.1 (2009) on the prevention of avoidable blindness and visual impairment, WHA66.12 (2013) on neglected tropical diseases, and WHA66.4 (2013) entitled “Towards universal eye health: a global action plan 2014–2019”;

Mindful of the 2030 Agenda for Sustainable Development, in particular Sustainable Development Goal 3 (Ensure healthy lives and promote well-being for all at all ages), and recognizing the important intersections between eye health and other Sustainable Development Goals, including Goal 1 (End poverty in all its forms everywhere), Goal 4 (Ensure inclusive and equitable quality education and promote lifelong learning opportunities for all), Goal 5 (Achieve gender equality and empower all women and girls), Goal 6 (Ensure availability and sustainable management of water and sanitation for all), Goal 8 (Promote sustained, inclusive and sustainable economic growth, full and productive employment and decent work for all) and Goal 10 (Reduce inequality within and among countries);



SEVENTY-FOURTH WORLD HEALTH ASSEMBLY  
Agenda item 13.9

WHA74(12)  
31 May 2021

## Integrated people-centred eye care, including preventable vision impairment and blindness

The Seventy-fourth World Health Assembly, having considered the consolidated report by the Director-General,<sup>1</sup>

Decided to endorse the global targets for effective coverage of refractive errors and effective coverage of cataract surgery to be achieved by 2030, considered by the Executive Board at its 148th session,<sup>2</sup> and reproduced in the Annex to this decision.

### Global targets for 2030

1. 30-percentage point increase effective coverage of cataract surgery by 2030
2. 40-percentage point increase effective coverage of refractive error by 2030

<sup>1</sup> See also document A73/4.

<sup>2</sup> United Nations General Assembly resolution 74/2 (2019).

<sup>3</sup> World report on vision. Geneva: World Health Organization; 2019 (<https://apps.who.int/iris/handle/10665/328717>, accessed 28 January 2020).

<sup>1</sup> Document A74/9.

<sup>2</sup> See document EB148/15, Annex; see also the summary records of the Executive Board at its 148th session, twelfth meeting (section 3) and fourteenth meeting (section 3).

# Coverage of essential Eye Care interventions towards Global Targets (2022)

Effective cataract surgery coverage



17.2%



13.9 %

Effective refractive error coverage



35.7%



12.4%

## #WHA74

### Global Targets

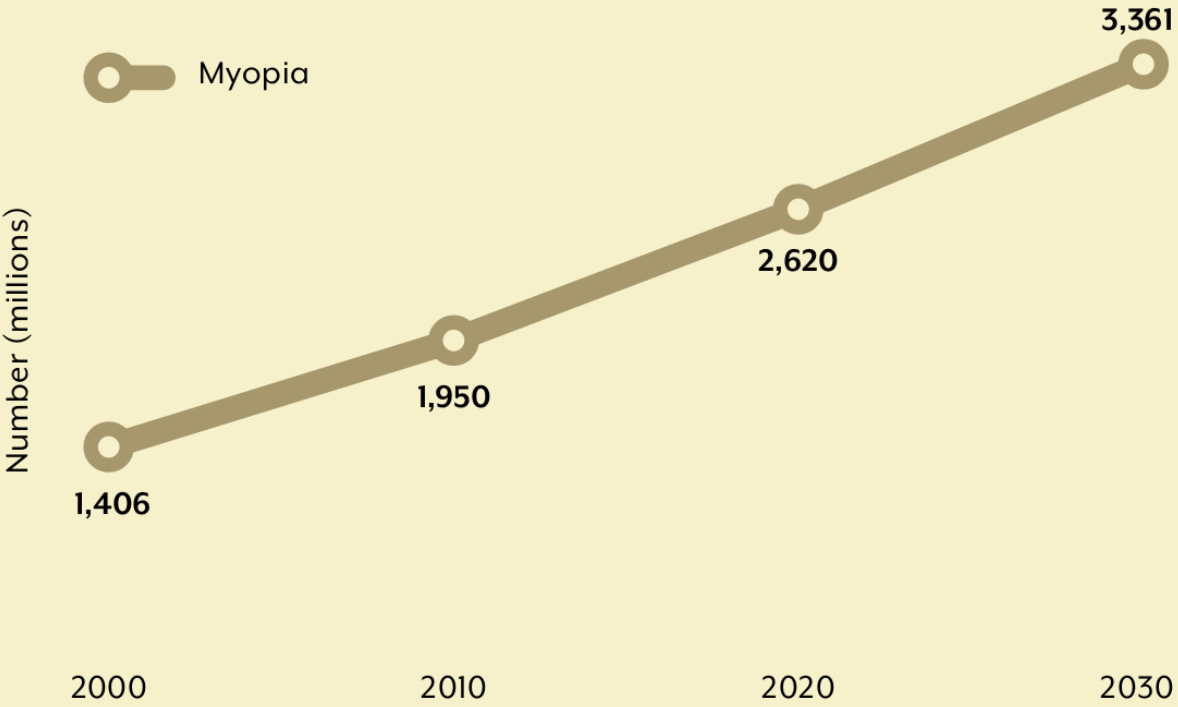


30% increase in effective coverage of cataract surgery



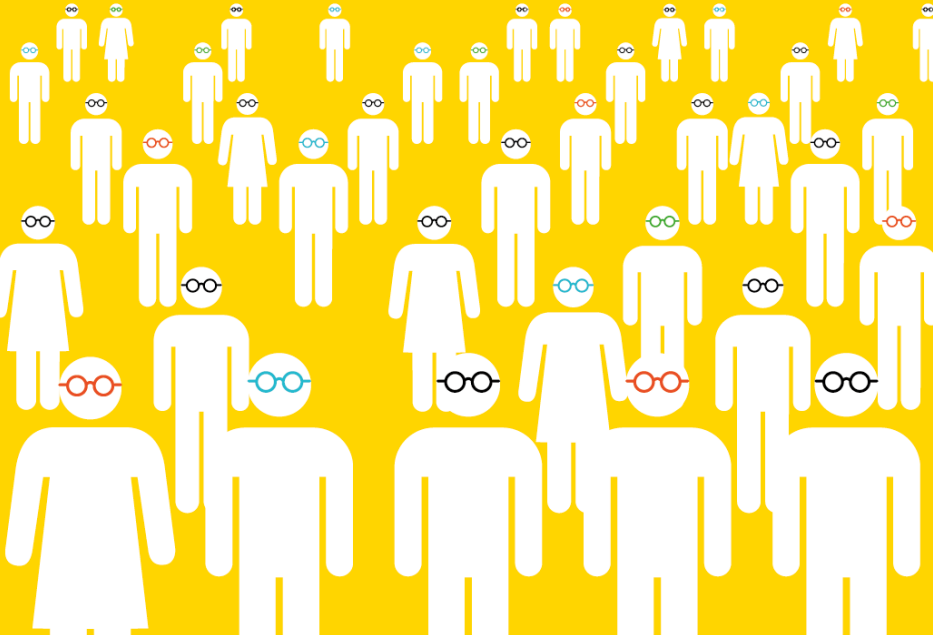
40% increase in effective coverage of refractive error

# Rising need



# Rising response

Eyeglasses coverage has increased by **5 percentage-points per decade**



# Eye Care Quality Upgraded

---



**50%** improvement in quality  
over the last two decades\*

\*(quality gap: 10% in 2000 vs. 5% in 2023)

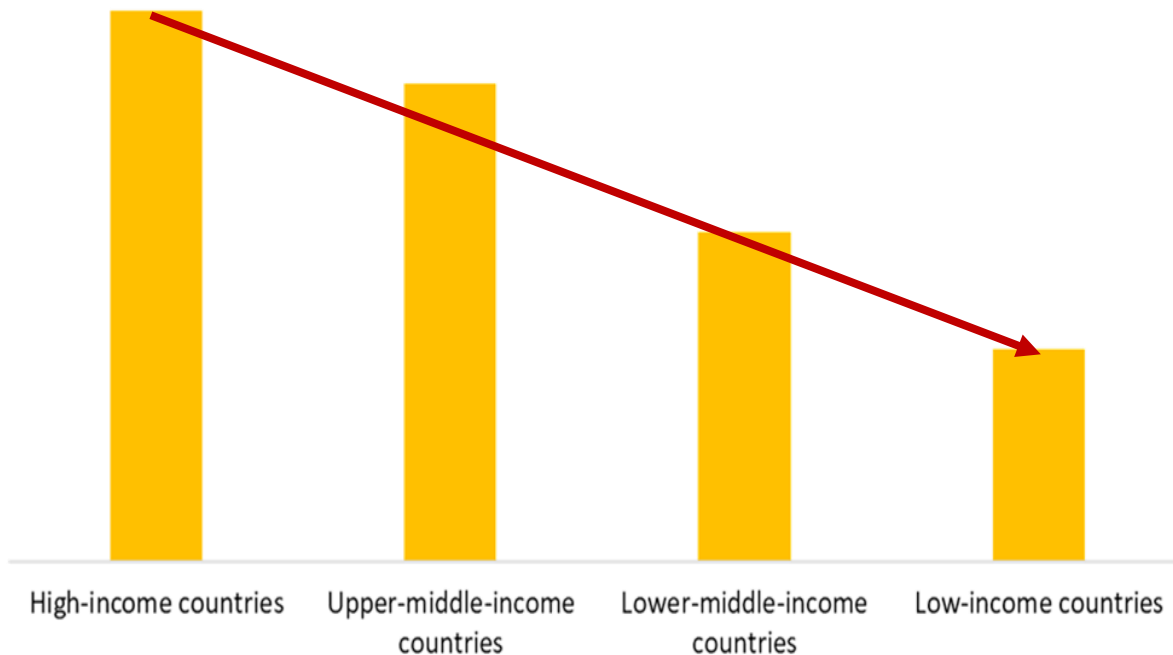
More people than ever are now receiving the **correct prescription** for their eyeglasses.

# Refractive Error Coverage - Income Level Differences

eyeglasses access is

**3.6x lower**

in low-income countries than in high-income countries

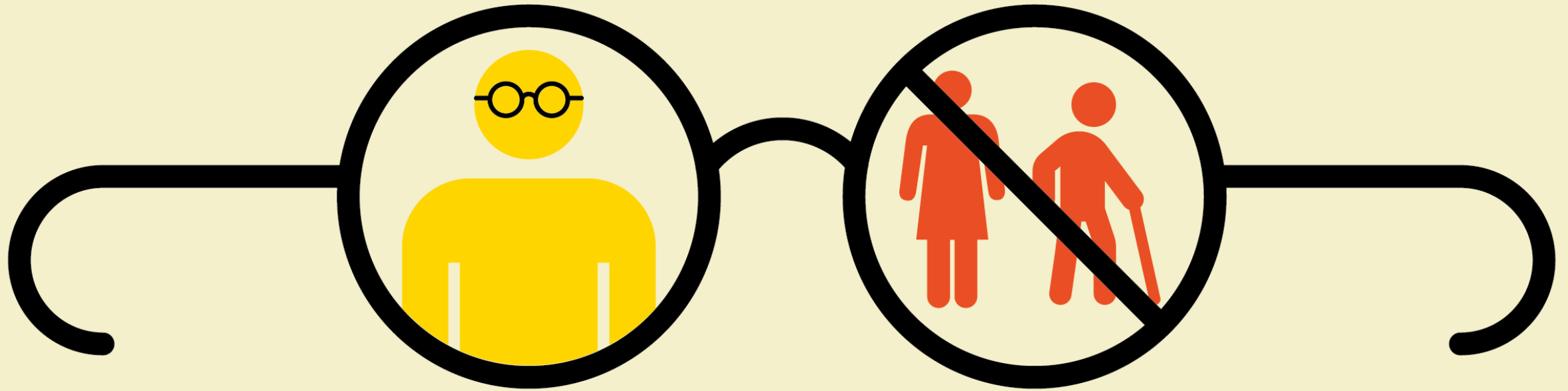


2 out of 3  
people in **low-income countries**  
who need eyeglasses, don't have  
access

The illustration shows three stylized human figures holding hands. The first figure on the left is white and wearing glasses. The second and third figures on the right are red. Below the figures, the text '2 out of 3' is written in large red and black numbers. Below that, the text 'people in low-income countries who need eyeglasses, don't have access' is written in black, with 'low-income countries' in red.

# Eyeglasses Access and Quality is Not Equal

---



**Women and older people** are **less likely** to get the eyeglasses they need and are often left behind.

# Universal Access to Eyeglasses

---



And ....

At the current pace, universal access to eyeglasses will not be achieved until ~~2030~~ **the end of the century.**

#EyeCareForAll / #ActionOnAgeing / #HealthyAgeing / #VisionHealth / #HealthForAll

# Eye Care Challenges in the AFRO Region

---

Failure to include **standardized indicators** for eye health in national health information systems

**Low awareness** among policymakers and the public, and misconceptions

**Lack of high-level leadership and governance** for strengthening sensory service delivery across the continuum of care

- No Eye Ear Health focal Points (36%)
- Policy/Strategy/Action Plan (57%)

**High out-of-pocket expenditure** for eye care

**Lack of equipment for diagnosis and management** of sensory conditions and prohibitive costs of assistive devices



**Fragmented and vertical service delivery** with no integration of sensory services into PHC

**Inadequately trained, qualified and distributed human resources** for sensory service across all levels of care

# WHO response ...

## Integrated people-centred eye care (IPEC)



# WHO-SA Work and Interventions on Eye Health

---

- 1. Provide leadership and governance for integrated eye care.**
  - Make eye care an integral part of universal health coverage,
  - Embed it in national health strategies and plans,
  - Adopt integrated people-centred eye care
- 2. Reorient service delivery around strong primary health care**
  - Shift eye care from fragmented, specialist-only services toward a continuum of promotive, preventive, curative and rehabilitative services
  - Deliver eye care as close to people as possible, with strong links from community and primary care to higher levels of care.
- 3. Strengthen health promotion and community engagement.**
  - Empower and engage people and communities so that the public understands eye health needs, seeks care early, and participates in protecting vision across the life course.
  - Raising awareness of risk factors, early symptoms, and the importance of timely care.
- 4. Scale up prevention across the life course.**
  - Support preventive action against avoidable vision loss by addressing major risks and preventable conditions coupled with earlier detection of eye conditions before they progress to impairment or blindness.
- 5. Expand access to treatment for priority eye conditions.**
  - WHO emphasizes high-impact, cost-effective treatment for major causes of poor vision, including refractive error correction, cataract services, glaucoma care, diabetic retinopathy management, and other interventions that reduce preventable sight loss.
- 6. Ensure rehabilitation is part of eye care, not an afterthought.**
  - Include rehabilitation for people with severe vision impairment or blindness so they can maintain functioning, independence and participation in society, even when vision cannot be fully restored.
- 7. Build and better distribute the eye care workforce**
  - Support strengthening the eye care workforce through training, continuous professional education, more rational task-sharing, and workforce planning based on population needs, so services are available beyond urban specialist centres.
- 8. Improve access to essential medicines, assistive products and technologies**
  - WHO is advancing the use of essential medicines, devices, assistive technology and eye care interventions within health benefit packages, including spectacles and other priority eye care inputs needed for prevention, diagnosis, treatment and rehabilitation.
- 9. Promote equitable financing and cross-sector coordination.**
  - WHO supports countries to reduce financial barriers to eye care by integrating eye care into UHC benefit packages and pooled financing arrangements.
  - Promoting and harnessing partnerships across sectors, civil society, communities, development partners and the private sector to advance integrated people-centred eye care,
- 10. Strengthen surveillance, monitoring and health information systems.**
  - Support improvement of health information systems for eye care, including better data on eye conditions, vision impairment, service coverage, unmet need, outcomes, facility performance, and national eye care capacity, so planning is evidence-based and progress can be tracked.



visit the Vision and Eye Care page



World Health  
Organization

**THANK YOU**