



# STANDARD TREATMENT GUIDELINES (STGs) & ESSENTIAL MEDICINES LIST (EML) OVERVIEW

---



**Dr Renee de Waal**  
**Co-Chairperson: NEMLC**

---



*Epilepsy Webinar*

*10 February 2026*



**health**

Department:  
Health  
REPUBLIC OF SOUTH AFRICA



# Overview



**The Primary Healthcare, Adult Hospital Level & Paediatric Hospital Level STGs and EML** aim to provide a platform for transparency to enable equitable access to safe, effective, and affordable treatment options at both PHC and hospital level, taking into consideration the changing clinical needs of our population and the pragmatic implications of the introduction of a new health technology.

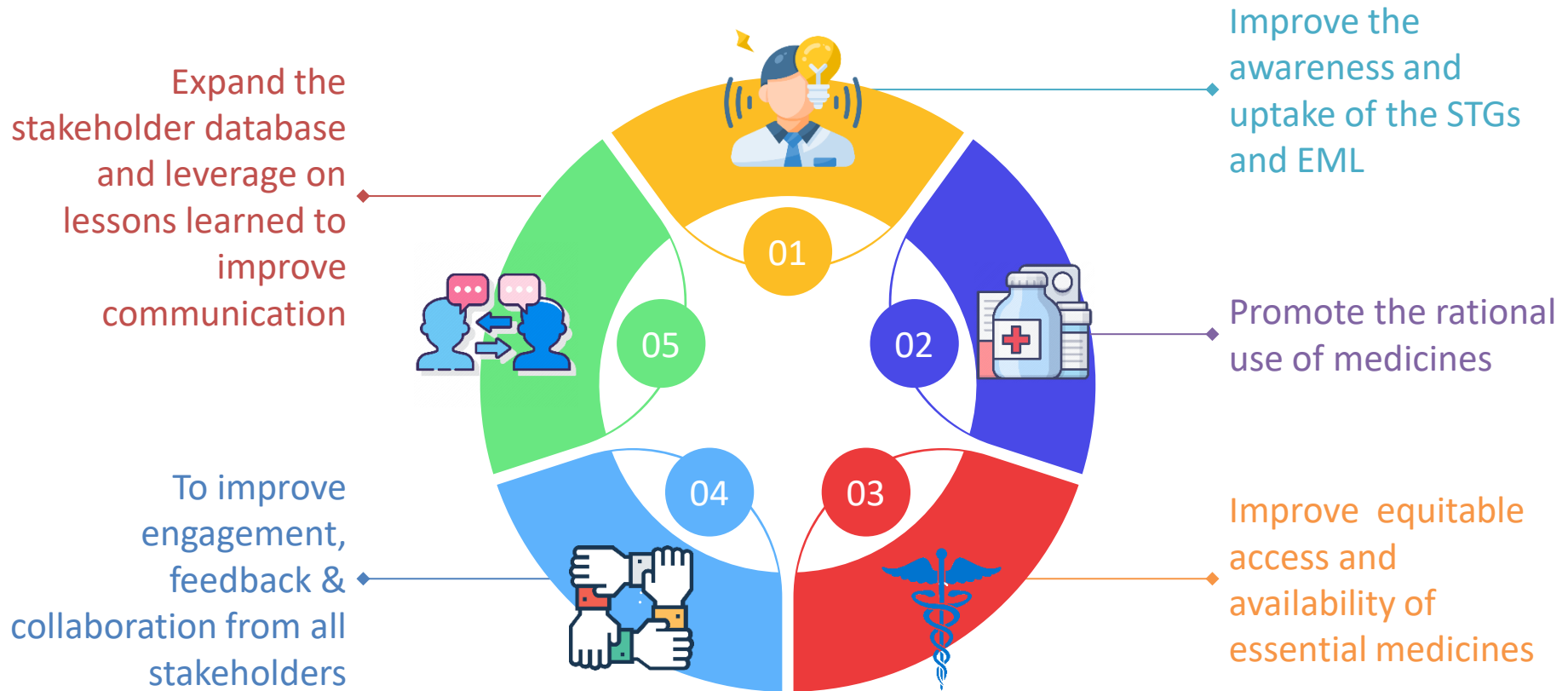


health

Department:  
Health  
REPUBLIC OF SOUTH AFRICA



# Objectives of the STG and EML Webinars



**health**

Department:  
Health  
REPUBLIC OF SOUTH AFRICA



# Latest STGs and EML 2026



**Primary Healthcare  
Level: 2024 edition  
(updated December  
2025)**

**Adult Hospital Level:  
2024 edition  
(updated December  
2025)**



**Paediatric Hospital  
Level: 2023 edition  
(updated November  
2025)**

**Tertiary and  
Quaternary Level EML:  
November 2025  
(being updated)**

**Updates are happening continuously – *across all levels of care simultaneously* – based on the NEMLC's approved topics for prioritisation**

**STGs are accompanied by technical documents e.g., medicine reviews, costing analyses, NEMLC reports, summary slides (for PHC STGs and EML)**



**health**

Department:  
Health  
REPUBLIC OF SOUTH AFRICA



# National Essential Medicines List Committee (NEMLC)



The NEMLC comprises of the following members with a term of office from 2025-2029:

EXPERTS	
Dr Renee De Waal ( <i>Co-chairperson</i> )	Prof Gary Reubenson
Prof Marc Blockman ( <i>Co-chairperson</i> )	Dr Michael McCaul
Prof Jacqui Miot	Prof Tamara Kredo
Prof Paul Ruff	
PROVINCIAL DEPARTMENT OF HEALTH REPRESENTATIVES	
Dr Angela Hartwig	Dr Germain Kapiamba
Mrs Boitumelo Molongoana	Dr Hanri van Niekerk
Mr Simthembile Langa	Dr Jameel Fakee (resigned)
Mrs Thandeka Njapha	Ms Yasmina Johnson
Dr Mulimisi Ramavhuya	



health

Department:  
Health  
REPUBLIC OF SOUTH AFRICA



# National Essential Medicines List Committee (NEMLC)



## CORRECTIONAL SERVICES AND MILITARY HEALTH SERVICES

**Mr David Rasebotsa**

**Col Jacobus Nortje**

## OTHER STAKEHOLDERS

**Dr Samantha Iyaloo (CMS)**

**Dr Boitumelo Semete-Makokotlela (SAHPRA)**

**Prof Johanna Meyer (NAGI)**

## CO-CHAIRPERSONS OF THE ERC

**Dr Andy Gray**

**Prof Lesley Robertson**

## NDOH PROGRAMMES

**Dr Kgomotso Vilakazi-Nhlapho**

**Mr Itumeleng Setlhare**

**Dr Lindiwe Mvusi**

**Dr Dudu Shiba**

**Dr Lesley Bamford**

**Prof Solomon Rataemane**

**Mr Kgwiti Mahlako**

**Ms Bilqees Sayed**

**Dr Ntobeko Mpanza**

**Prof Georgia Demetriou**

**Ms Marione Schonfeldt**

**Mr Lindsey Jacobs**

**Mr Fundile Gebremedhin**

**Dr Albert Muranda**

**Dr Nolene Naicker**

**Ms Edna Baloyi**

**Ms Lucy Chisale**

**Ms Yulene Kock**

**Ms Sisanda Mtatambi**

**Dr Relebohile Ncha**

**Ms Riona Sonne**

# Expert Review Committee (ERC)



The ERC comprises of the following members and reports directly to the NEMLC:

## Expert Review Committee

Dr Andy Gray (Co-Chairperson)	Dr Halima Dawood
Prof Lesley Robertson (Co-Chairperson)	Dr Jessica Taylor
Dr Christopher Sutton	Dr Jimmy Kojela Mohale
Prof Clint Hendrikse	Prof Karen Cohen
Mrs Danine Kitshoff	Dr Mantwa Chisale Mabotja
Dr Gayle Tatz	Dr Natasha Gloeck
Dr Gustav Thom	Prof Phumla Sinxadi
Mrs Solange Durao	Dr Tanya Ruder

## Co-opted members to the Expert Review Committee

Dr Namhla Madikizela	Dr Ya-Ying Wang
----------------------	-----------------

## Subject Matter Experts

Dr Evelyn Thsehla	Prof Stefan Gebhardt
Dr Jeremy Nel	Dr Liezl Du Plessis
Prof Alicia Sherrif	

# Topic Prioritisation for the 2025 – 2029 Review Cycle



All motivations and comments received are **documented and assessed per review cycle**, with annual reassessment where needed; topic nomination does **not guarantee inclusion**.

Review topics are organised into **broad clinical areas**, as STG chapter reviews no longer occur end-to-end every cycle; external input may be sought for specific sections



NEMLC uses a **systematic, cyclical prioritisation process** to identify review topics for STG and EML updates, informed by stakeholder input and formal calls for comment.



Nominations for the 2025–2029 cycle are **closed**, with only **urgent or public-safety-related topics** considered for fast-tracked inclusion.



Broad topic areas approved and prioritised in 2025 include **Endocrine, Oncology, Respiratory, STIs, and Reproductive Health**, with technical work underway via ERC Evidence Working Groups



**health**

Department:  
Health  
REPUBLIC OF SOUTH AFRICA



# Navigating the Websites – Knowledge Hub



## PLEASE NOTE:

All the STGs, EML and related technical documents reviewed in the 2020-2024 review period for all levels of care have been moved from the Knowledge Hub webpage to the NHI webpage on the National Department of Health Website. They can be accessed below:

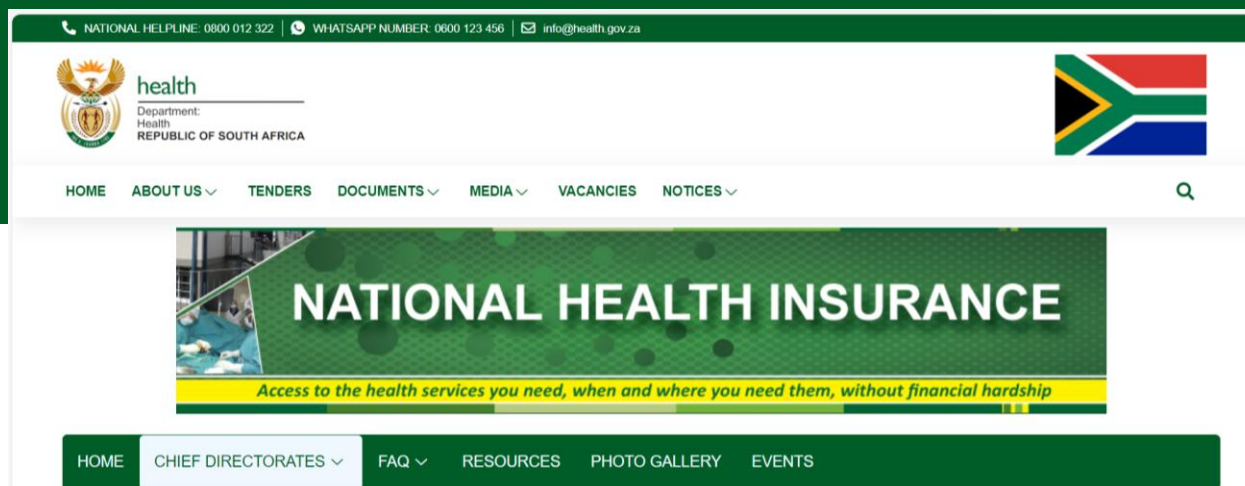
<https://www.health.gov.za/nhi-edp-stgs-eml>



health

Department:  
Health  
REPUBLIC OF SOUTH AFRICA





## Essential Drugs Programme

Click here for all information relating to

- PHC STGs & EML
- AHL STGs & EML
- Paediatric Hospital level STGs & EML
- Tertiary & Quaternary level EML

Essential Drugs Programme (EDP) was established in terms of the National Drug Policy within the Affordable Medicines Directorate (AMD). The aim of the programme is to ensure that *affordable, good quality essential medicines are available at all times in adequate amounts, in appropriate dosage*



Click here for

- Circulars
- NEMLC bulletins
- Webinars, Presentations & Campaigns

The unit oversees development and implementation of the Standard Treatment Guidelines (STG's) and Essential Medicines List (EML) of South Africa through the ministerially appointed National Essential Medicines List Committee (NEMLC).

The EML refers to the list of medicines deemed to satisfy the priority health care needs of the population.

The STG's provides guidance to health care professionals on the use of medicines which appear on the EML. It consists of a collection of chapters containing disorder groups, background information on the disorder, treatment regimens, as well as other relevant information.

Standard Treatment Guidelines and Essential Medicines List (STGs and EML)

Antimicrobial resistance (AMR)

Communication



health

Department:  
Health  
REPUBLIC OF SOUTH AFRICA





[HOME](#) [CHIEF DIRECTORATES ▾](#) [FAQ ▾](#) [RESOURCES](#) [PHOTO GALLERY](#) [EVENTS](#)

## Standard Treatment Guidelines and Essential Medicines List (STGs and EML)

South Africa has committed to “achieve Universal Health Coverage including financial risk protection, access to quality essential health-care services and access to safe, effective, quality and affordable essential medicines and vaccines for all”, one of the 17 Sustainable Development Goals set out by the United Nations. Therefore, an Essential Medicines List (**EML**) with supporting Standard Treatment Guidelines (**STGs**) has been developed, for different levels of care.

The respective STGs and EML for primary healthcare and hospital levels (adults and paediatrics), and the EML for tertiary level of care are described below. The STGs and EML satisfies the priority needs of the South African population, provided for by the National Drug Policy of 1996 and is based on the WHO EML concept of evidence-medicine principles of comparative efficacy, safety, and affordability. Developed and maintained by the ministerially appointed National Essential Medicines List Committee (**NEMLC**), Technical Expert Review Sub-Committees of NEMLC and the Essential Drugs Programme from the Affordable Medicines Directorate of the National Department of Health (**NDoH**).

The rationale for inclusion or exclusion of a medicine to the EML is described in NEMLC evidence reports, medicine reviews and costing analyses.

The therapeutic interchange database lists therapeutic alternatives for medicines listed on the respective EML.

Primary  
Healthcare

Hospital Level -  
Paediatrics

Hospital Level -  
Adults

Hospital Level - Tertiary And  
Quaternary

Governance &  
Policies



health

Department:  
Health  
REPUBLIC OF SOUTH AFRICA

Click on the relevant tab for access updates to the  
STGs & EML for each level of care



# Resources



## STGs and EML and Related Technical Documents

- NHI Webpage: <https://www.health.gov.za/nhi-edp-stgs-eml>
- EMGuidance Mobile & Desktop Application: <http://onelink.to/sy896k>
- NEMLC Bulletins – after each NEMLC meeting: <https://www.health.gov.za/nhi-edp-comm/>
- Circulars: <https://www.health.gov.za/nhi-edp-comm/>

Got Questions?  
SAEDP@health.gov.za



## Contracting and Contract Management Documents

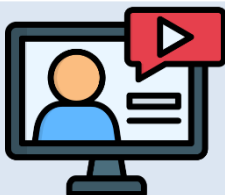
National Department of Health Website: <https://www.health.gov.za/nhi-hpp-amd/>

### NEW EDP WHATSAPP COMMUNICATION CHANNEL

For the latest updates to the EDP, join our WhatsApp channel below:  
<https://chat.whatsapp.com/GEN6bH1rKYVKSJ1bz34Ne9>

OR

Scan the QR code



## Webinars

- Knowledge Hub: <https://knowledgehub.health.gov.za/webinars>