



Implementation of the Epilepsy Training in Adult Medicine Course 2023 - 2025



Dr MV Gule
Neurologist: Groote Schuur Hospital &
University of Cape Town



10 February 2026



health

Department:
Health
REPUBLIC OF SOUTH AFRICA



The Global Perspective



>50 million people worldwide have epilepsy



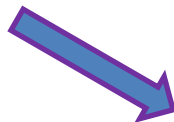
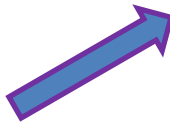
"...70% of people with epilepsy have no access diagnosis or treatment. And yet, 70% of those could become seizure-free."

In the Shadow of Epilepsy. Lancet, 1997



Intersectoral Global Action Plan on Epilepsy and Other Neurological Disorders (IGAP)

WHO, 2022



Improving the lives of people with epilepsy:
a technical brief

World Health Organization

Health-care workforce:
case study

Changing pediatric care for epilepsy through cascade training

BPNA PET cited as exemplar
WHO, 2022



ILAE/IBE/WFN/WHO proposed 90-80-70 Targets for Epilepsy by 2030



health

Department:
Health
REPUBLIC OF SOUTH AFRICA



In keeping with the goals of IGAP 2031



The ILAE engages in a wide variety of educational initiatives

Journal: Epileptic Disorders



ILAE Academy

Online Courses



EpilepsyDiagnosis.org

Young in Epilepsy



**Plenary Lectures –
available online**



**Social Media and
Podcasts**



health

Department:
Health
REPUBLIC OF SOUTH AFRICA



With resources available, what additional benefit does ETAM offer?



EpilepsyDiagnosis.org
Diagnostic Manual

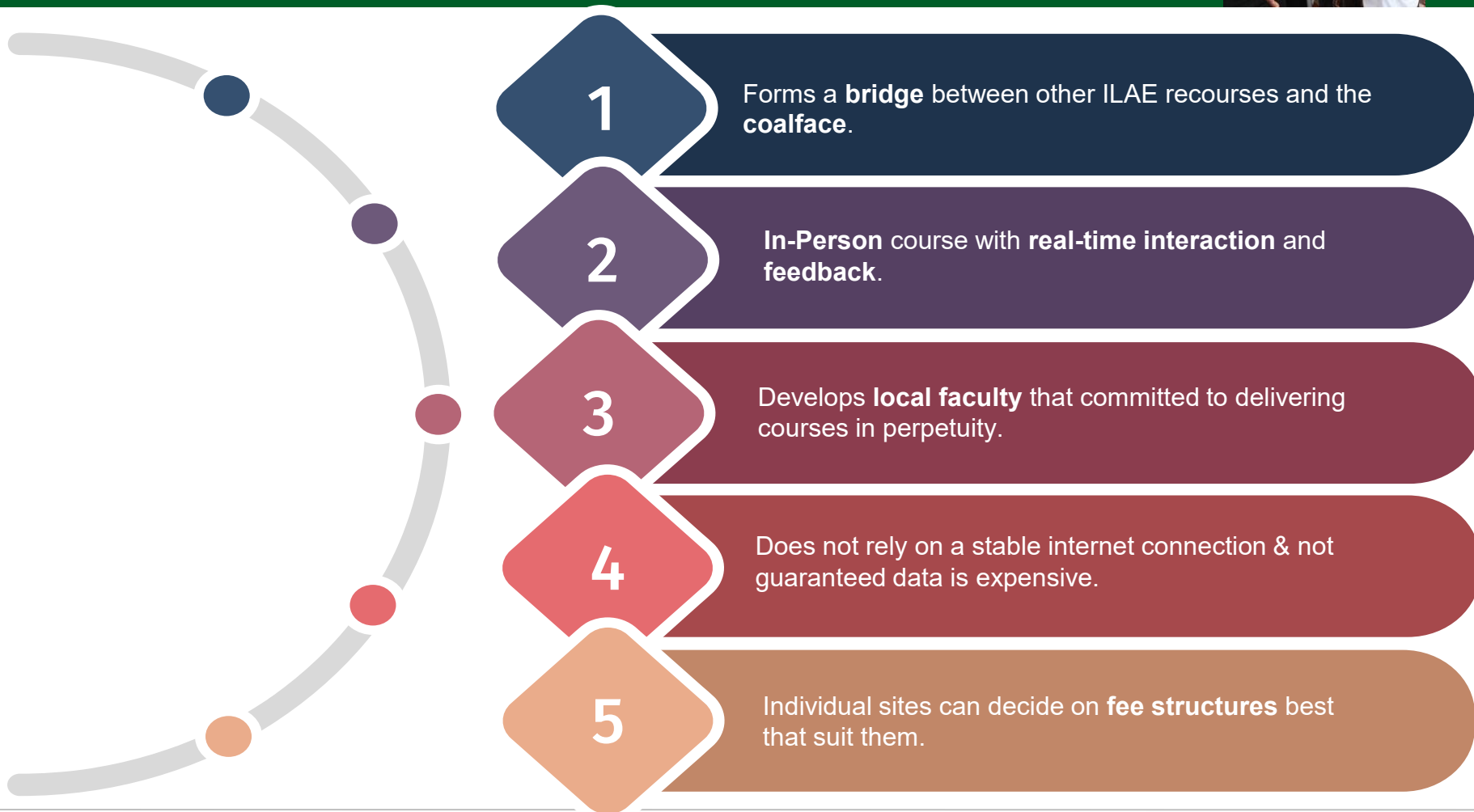


health

Department:
Health
REPUBLIC OF SOUTH AFRICA



Value of ETAM



health

Department:
Health
REPUBLIC OF SOUTH AFRICA



Value of ETAM



“In one intense day, where the most vital information, to the people that need it the most.”

- J. Whilmshurt, 16 May 2025



health

Department:
Health
REPUBLIC OF SOUTH AFRICA



Value of ETAM



health

Department:
Health
REPUBLIC OF SOUTH AFRICA





health

Department:
Health
REPUBLIC OF SOUTH AFRICA

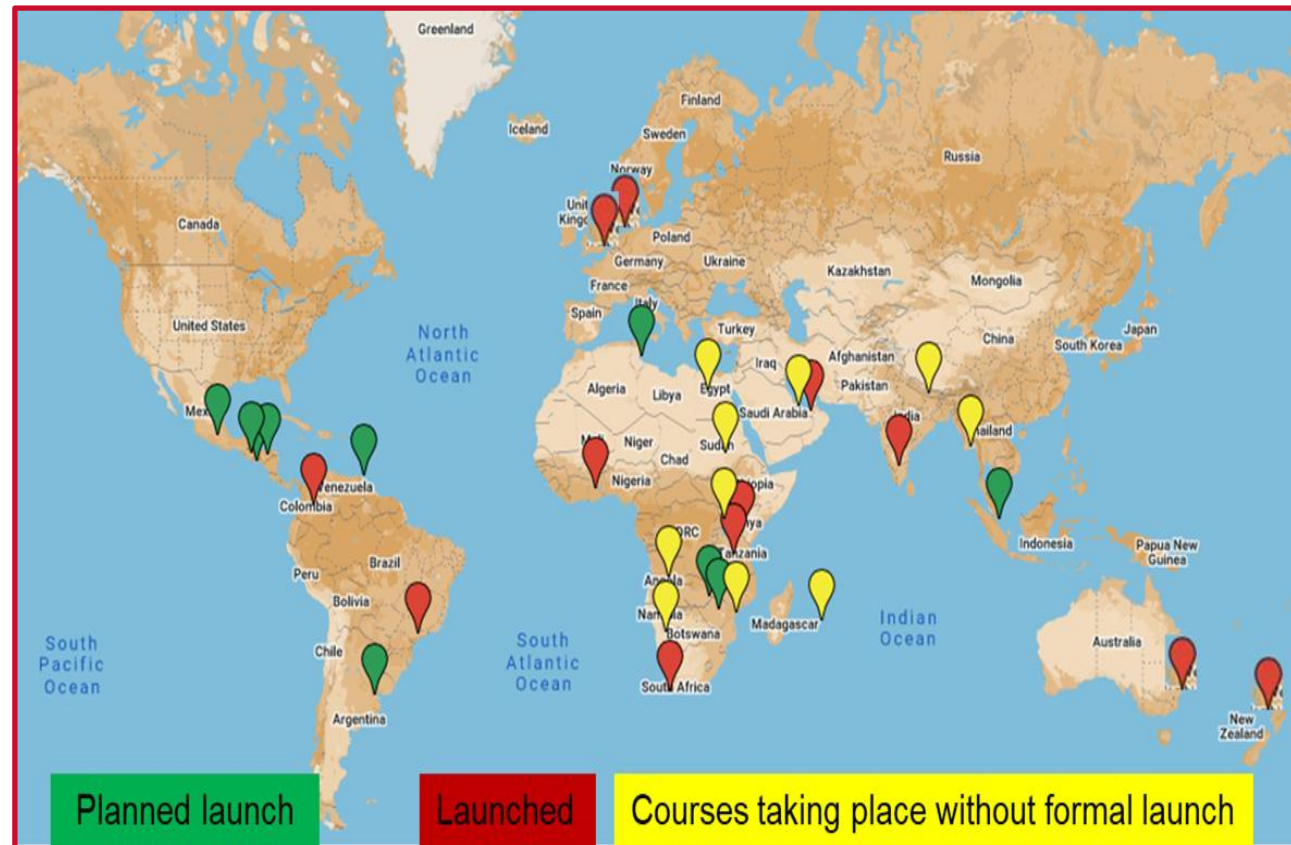




PET Success: 2013 to 2023



- 11,800 UK health workers trained
- 5000 health workers outside the UK
- >350 faculty volunteer
- Partnerships with country Paediatric Associations
- Multilingual Material PET: Taught in English, Portuguese, Spanish, French



health

Department:
Health
REPUBLIC OF SOUTH AFRICA



Target Population



ETAM is designed for a broad range of primary health care workers. These include:

- General practitioners
- Nurse practitioners
- Interns and Junior Doctors
- Medicine and Neurology trainees

The focus remains aimed at **Primary healthcare interactions.**

Designed to be cost-effective and **highly relevant to the local context**, addressing the practical needs.

ETAM has also been attended by **community-based patient-advocates** and members non-medical advocacy groups.



health

Department:
Health
REPUBLIC OF SOUTH AFRICA





Prioritise human
connection, social
engagement.

Entrusting people as
instrument of change

Technology in service,
not in place, of people



health

Department:
Health
REPUBLIC OF SOUTH AFRICA



Structure and Curriculum



ETAM

epilepsy training
in adult medicine

The ETAM course is modeled after the pediatric epilepsy training (PET) courses

- Didactic large group sessions
- Small discussion-based tutorials to encourage context-specific feedback and active participation – everyone has something to contribute



ETAM consists of 14 interactive, modular lectures in four Sessions

1. History & Differential Diagnoses
2. Seizures & Syndromes
3. Comorbidities & Risks
4. Management & Treatment



health

Department:
Health
REPUBLIC OF SOUTH AFRICA



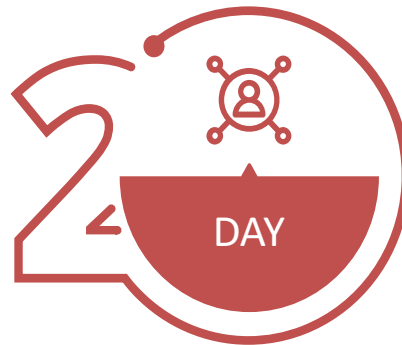
Cascade Learning Model



Structure of a Full ETAM Deployment



Faculty from local or neighbouring countries deliver the ETAM course to participants.



A train-the-trainers session is held, where participants learn how to deliver the course themselves.



Newly trained faculty present the course to a new cohort of participants, further expanding the network of trained providers.



health

Department:
Health
REPUBLIC OF SOUTH AFRICA



Cascade Learning Model



**LONG-
TERM
VISION**

The goal is to build
a sustainable
network of local
epilepsy educators.

Faculty members
committing to
holding three to
five courses per
year.

This creates a force multiplier
effect, enabling the program to
reach thousands of primary
care providers over time and
standardize the management
of epilepsy in adults at primary
care centres.



health

Department:
Health
REPUBLIC OF SOUTH AFRICA



Pilot – Moshi Tanzania



health

Department:
Health
REPUBLIC OF SOUTH AFRICA



ETAM Full Deployment – Day 1



health

Department:
Health
REPUBLIC OF SOUTH AFRICA



Full Deployment – Day 2

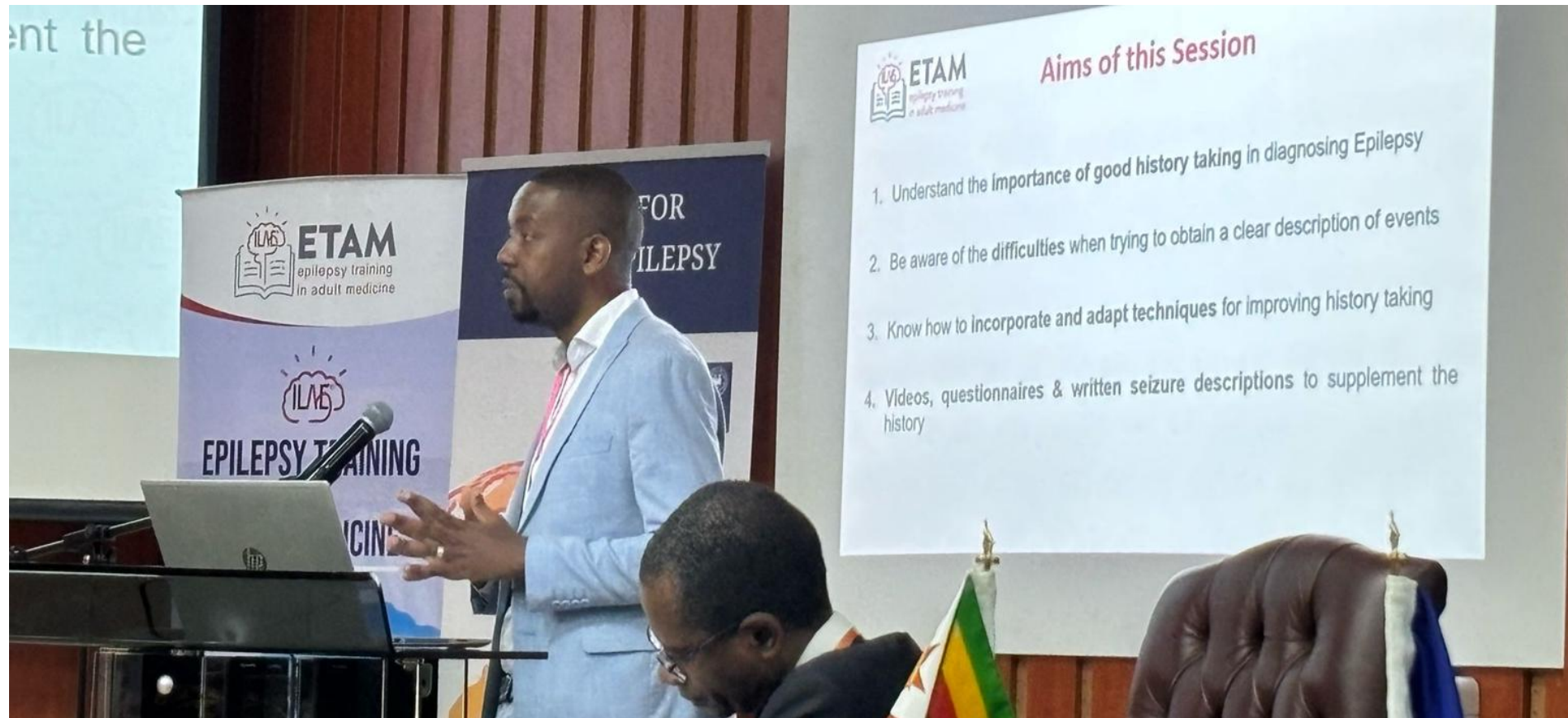


health

Department:
Health
REPUBLIC OF SOUTH AFRICA



ETAM Full Deployment – Day 3



health

Department:
Health
REPUBLIC OF SOUTH AFRICA



Acknowledgements



As ETAM faculty grows we would like to thank several key contributors who have supported the development of ETAM.

Professor **Martin Kirkpatrick** and Dr. **Colin Dunkley**, who contributed to structuring the program and provided guidance based on their experience with the PET course. Professor **Richard Walker** for facilitating the pilot study in Moshi.

Professor's **Arjune Sen**, **Gift Ngwende** and the Centre for Global Epilepsy.

Professors **Helen Cross**, **Jo Wilmshurst**, **Gagandeep Singh**



health

Department:
Health
REPUBLIC OF SOUTH AFRICA



Acknowledgements

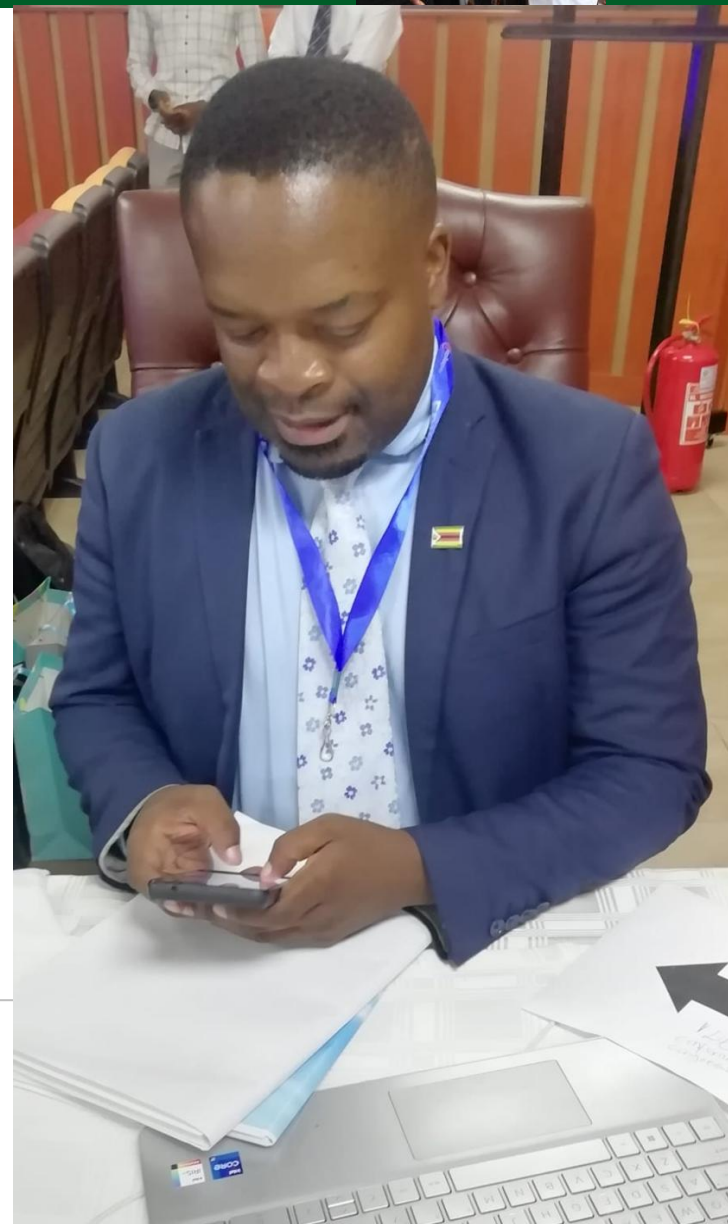


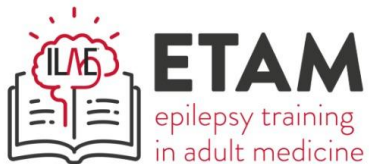
Lastly, Taurai Mudzana, Gus Egan, Anna Minarik, Sonia Vallentin, Lacey Schmeidler and Jessica Ball for there patience and logistical support



health

Department:
Health
REPUBLIC OF SOUTH AFRICA





SCAN ME!



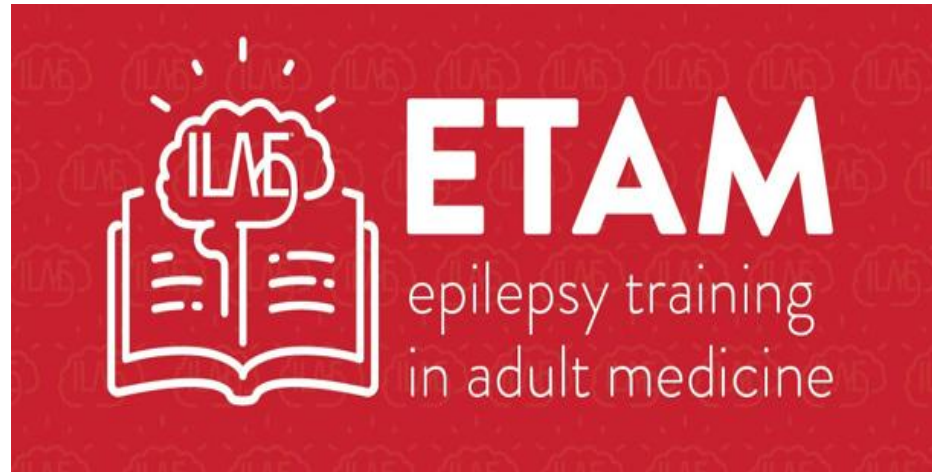
Scan to join the ETAM database
and receive updates on
upcoming training and events.



health

Department:
Health
REPUBLIC OF SOUTH AFRICA





Points for Discussion?



health

Department:
Health
REPUBLIC OF SOUTH AFRICA

