



Webinar

Pesticide & Agricultural Stock Remedies Poisoning

Date: 22 January 2026

Time: 13h00 – 15h00



health

Department:
Health
REPUBLIC OF SOUTH AFRICA





Thank you for your interest in this webinar

- The chat has been disabled for the attendees.
- **Please use the Q&A box to post questions for our panel of experts.**
- The session is recorded and will be shared with all the presentations on the Knowledge Hub – www.knowledgehub.health.gov.za/webinars
- **E-mail** knowledgehub@health.gov.za
- Register in advance for the webinars (24 hours before)
- CPD certificates

MS BELINDA MAKHAFOLA



Ms Belinda Makhafola – National Director for Environmental Health. She worked as an Environmental Health Practitioner for 9 (nine) years in a local municipality before joining the National Department of Health in 2006 as an Assistant Director in Health Promotion, and then as a Deputy Director; Environmental Health until early 2024





Programme Director: Ms B Makhafola

Time	Item	Presenter
12:30 – 12:45	Dry Run	Host-Knowledge Hub
12:45—13:00	Participants join the Zoom platform	Participants
13:00 – 13:10	Opening, Welcome & Purpose	Belinda Makhafola Programme Director
13:10 – 13:20	Introductions of Presenters	Belinda Makhafola Programme Director
13:20 – 13:40	Background information	Aneliswa Cele
13:40 – 14:00	Clinical Diagnosis , Poison Information Helpline	Dr Cindy Stephen
14:00– 14:20	Laboratory Diagnosis and testing what is and whats to come	Dr Jody Rusch NHLS
14:20—14:40	Surveillance and notification improvement	Ms. Genevie Ntshoe NICD
14:40 – 14:55	Q & A Session	Programme Director & Panelists
14:55 – 15:00	Vote of Thanks & Closure	Programme Director

THE END!

MS ANELISWA CELE



Ms Aneliswa Cele is a qualified Environmental Health Practitioner working for the National Department of Health as a Chief Director Environmental Health and Port Health Services and Acting Chief Director Communicable Diseases Control under the Branch: Primary Health Care Services.



DR CINDY STEPHEN



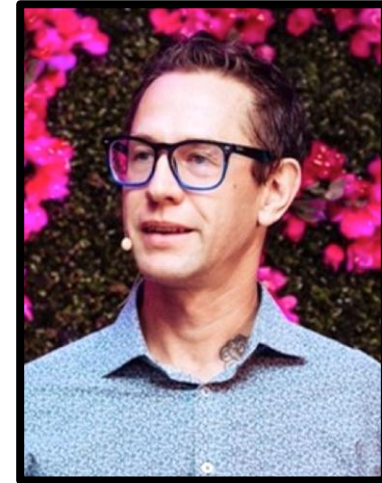
Dr Cindy Stephen is a Medical Doctor who retired as Director of the Poisons Information Centre (PIC) at Red Cross War Memorial Children's Hospital in February 2025.



DR JODY RUSCH



Dr Jody Rusch is a Chemical Pathologist based at Groote Schuur Hospital and Red Cross War Memorial Children's Hospital, jointly appointed to the National Health Laboratory Service and the University of Cape Town.



MS GENIVIE NTSHOE



Ms Genevieve Ntshoe is an Epidemiologist in the Division of Public Health Surveillance and Response at the National Institute for Communicable Diseases (NICD).





Thank you for attending this webinar

The session recording and all the presentations will be shared on the Knowledge Hub – www.knowledgehub.health.gov.za

THANK YOU