

Adult Primary Care (APC) 2023 Clinical Tool Updates

OPENING REMARKS

Jeanette R Hunter
2 November 2023



INTRODUCTION



Primary Health care has long been recognised as the cornerstone of sustainable health systems for Universal Health Coverage,

First Declaration of Alma-Ata in 1978,

Renewed in the Declaration of Astana in 2018,

September 2023 in New York at the UN General Assembly meeting on Universal Health Coverage in a post COVID world



Minister MJ Phaahla: “We have made good progress in transforming the public health sector into an integrated national system, with a primary healthcare approach being the underlying philosophy and the foundation of the implementation of a district health system and preparing for universal health coverage.”



health

Department:
Health
REPUBLIC OF SOUTH AFRICA



Service Delivery Platform



COMMUNITY BASED SERVICES

(CHWs, School Health, Environmental Health)

CLINICAL SERVICES IN HEALTH FACILITIES

DIAGNOSTIC AND PARA- CLINICAL SERVICES

MEDICINE SUPPLIES

EMERGENCY MEDICAL SERVICES

REFERRAL SYSTEM

Administrative processes

Finance and Supply Chain Management

Human Resources Management and Legal Services

Infrastructure (Buildings, Equipment, ICT)

Information Management

Security Services

Leadership, Governance and Community Participation

T
R
A
I
N
I
N
G

C
O
M
M
U
N
I
C
A
T
I
O
N

C
O
L
L
A
B
O
R
A
T
I
O
N

U
H
C



Before ICRM, ICSM and APC

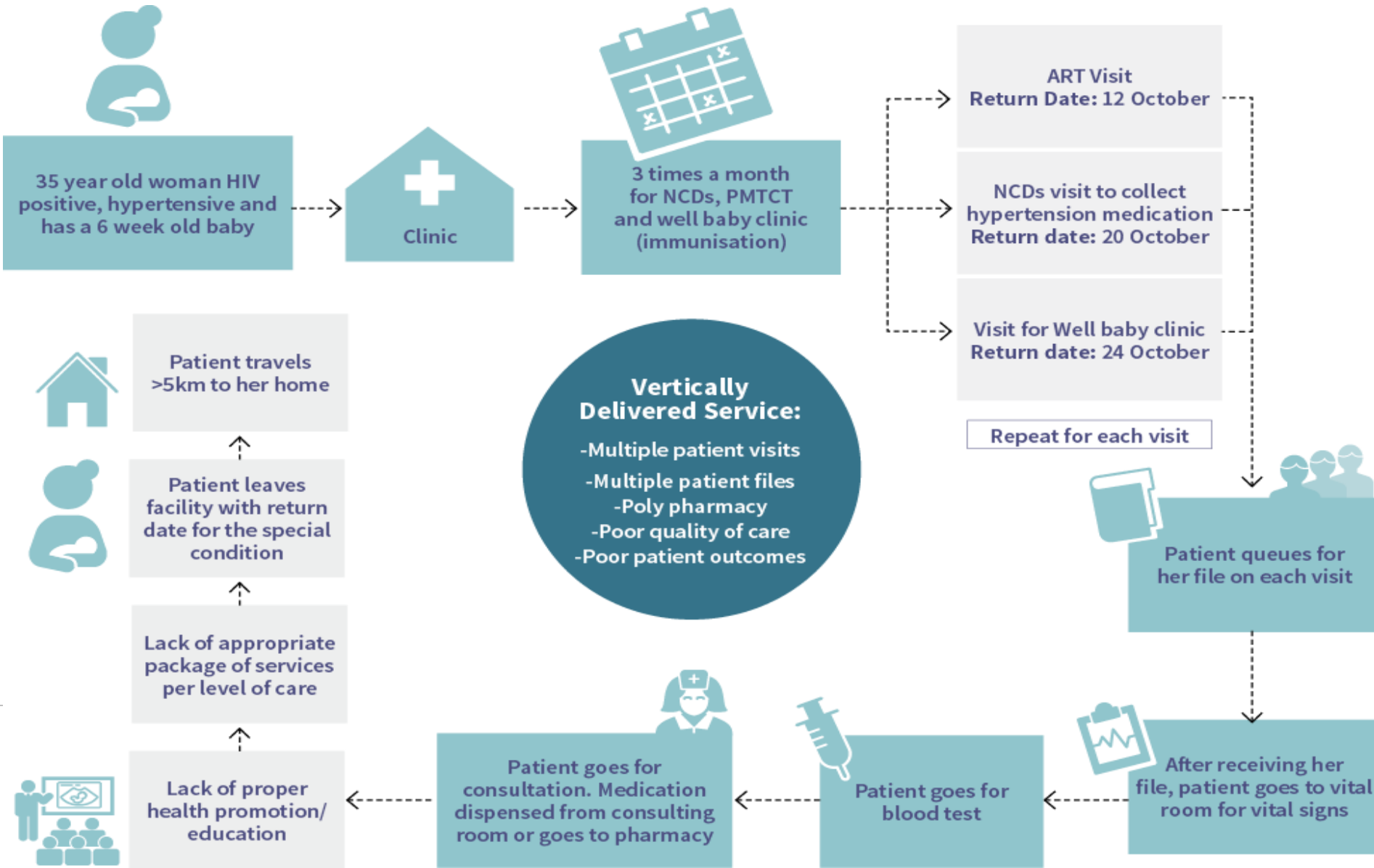


health

Department:
Health
REPUBLIC OF SOUTH AFRICA



THE PROBLEMATIC PATIENT JOURNEY



UHC AND ICRM



- SA's strength in pursuit UHC is its nurse-led public sector primary health care clinics
- The launch of the Ideal Clinic initiative in July 2013 followed the government's green paper on National Health Insurance:
- An Ideal Clinic:
 - good infrastructure
 - adequate staff
 - adequate medicine and supplies
 - good administrative processes
 - sufficient bulk supplies
 - uses applicable clinical policies, protocols, guidelines as well as partner and stakeholder support, to ensure the provision of quality health services to the community.

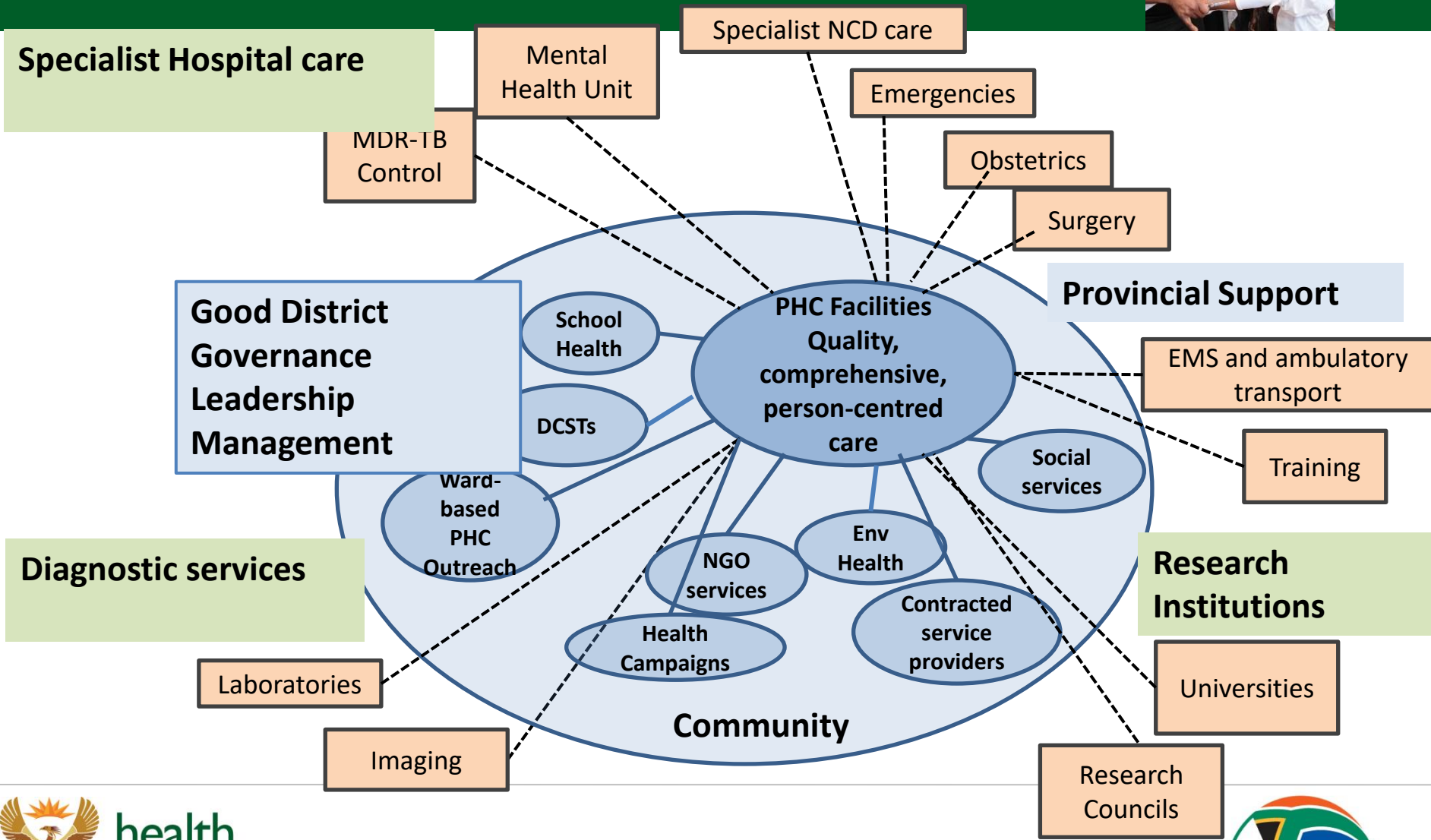


health

Department:
Health
REPUBLIC OF SOUTH AFRICA



DISTRICT HEALTH SYSTEM



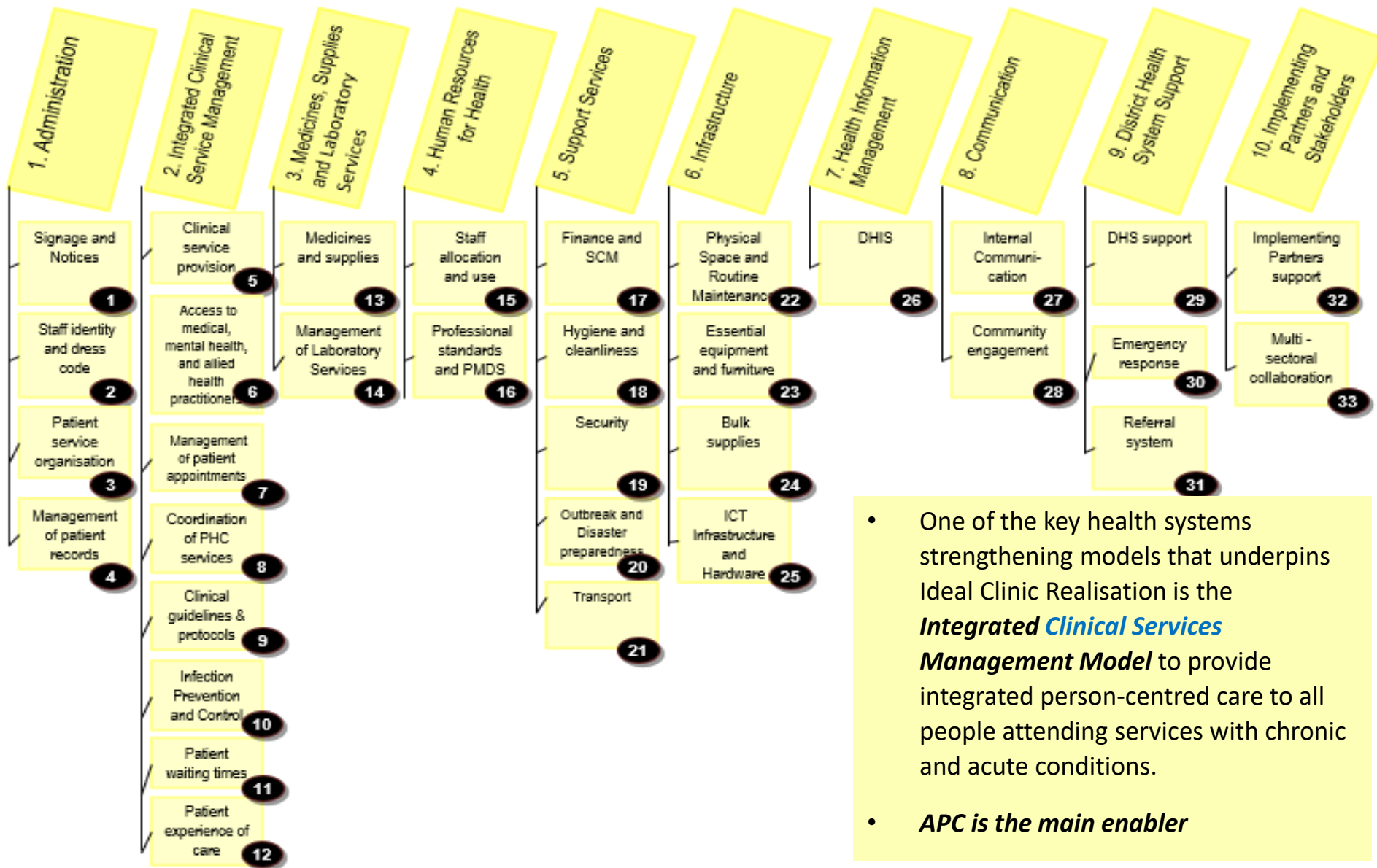
health

Department:
Health
REPUBLIC OF SOUTH AFRICA



ICRM FRAMEWORK

10 COMPONENTS AND 33 SUBCOMPONENTS



- One of the key health systems strengthening models that underpins Ideal Clinic Realisation is the ***Integrated Clinical Services Management Model*** to provide integrated person-centred care to all people attending services with chronic and acute conditions.
- ***APC is the main enabler***

ICRM PROGRESS



Province	Total # facilities	# IC 2015/16	% IC 2015/16	# IC 2021/22	% IC 2021/22	# IC 2022/23	% IC 2022/23	# OHSC COMP	% OHSC COMP
Eastern Cape	776	14	1,8%	178	23,0%	192	24,7%	85	11%
Free State	219	22	9,9%	143	65,6%	154	70,3%	56	25%
Gauteng	371	89	24,2%	341	92,4%	358	96,8%	98	26%
KwaZulu-Natal	607	141	23,2%	511	84,2%	559	92,4%	253	42%
Limpopo	478	27	5,6%	167	34,6%	109	22,6%	34	7%
Mpumalanga	294	19	6,6%	173	59,0%	235	79,9%	92	31%
Northern Cape	161	3	1,9%	35	21,6%	27	16,8%	6	4%
North West	307	7	2,3%	180	58,1%	205	66,6%	56	18%
Western Cape	258		0,0%	200	76,0%	207	80,9%	50	19%
South Africa	3471	322	9,3%	1928	55,4%	2046	58,9%	730	21%

CHALLENGES



- Two pandemics over last two decades warded off by PHC
- Rise in incidence of NCD



health

Department:
Health
REPUBLIC OF SOUTH AFRICA



OVERCOMING CHALLENGES



- Strong partnerships!
 - Our communities
 - Other government departments
 - Private Sector
 - NGO's and civil society organizations
 - Academia
 - Professor Lara Fairall and her team - University of Cape Town's Knowledge Translation Unit.



health

Department:
Health
REPUBLIC OF SOUTH AFRICA





THANK YOU

FOR YOUR CONTRIBUTION TOWARDS
HEALTH SYSTEM STRENGTHENING!



Doing good for
others is not a
duty...
It is a Joy!

12



health

Department:
Health
REPUBLIC OF SOUTH AFRICA

